



[Go to Product page](#)

Datasheet for ABIN5588617
anti-SPDEF/PSE antibody

1 Image

Overview

Quantity:	100 µg
Target:	SPDEF/PSE (SPDEF)
Reactivity:	Human
Host:	Mouse
Clonality:	Monoclonal
Conjugate:	This SPDEF/PSE antibody is un-conjugated
Application:	Western Blotting (WB), ELISA

Product Details

Purpose:	Mouse monoclonal antibody raised against full length recombinant SPDEF.
Immunogen:	Recombinant protein corresponding to full length human SPDEF.
Clone:	3
Isotype:	IgG1
Specificity:	It can expression in HeLa whole cell lysate.
Cross-Reactivity:	Human

Target Details

Target:	SPDEF/PSE (SPDEF)
Alternative Name:	SPDEF (SPDEF Products)
Background:	Full Gene Name: SAM pointed domain containing ets transcription factor

Target Details

Synonyms: PDEF,RP11-375E1__A.3,bA375E1.3

Gene ID: 25803

NCBI Accession: [NM_012391](#)

Application Details

Application Notes: Western blot (1:500)
The optimal working dilution should be determined by the end user.

Restrictions: For Research Use only

Handling

Format: Liquid

Buffer: In Citrate-Tris-HCl buffer, pH 7.0 (0.02 % Proclin 300)

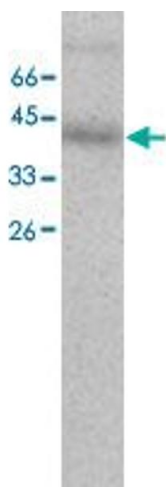
Preservative: ProClin

Precaution of Use: This product contains ProClin: a POISONOUS AND HAZARDOUS SUBSTANCE which should be handled by trained staff only.

Storage: 4 °C,-20 °C

Storage Comment: Store at 4°C. For long term storage store at -20°C.
Aliquot to avoid repeated freezing and thawing.

Images



Western Blotting

Image 1. Western blot analysis of HeLa whole cell lysate with SPDEF monoclonal antibody, clone 3 at 1:500 dilution.