

Datasheet for ABIN5588723
anti-SPTLC2 antibody (C-Term)[Go to Product page](#)

2 Images

Overview

Quantity:	100 µg
Target:	SPTLC2
Binding Specificity:	C-Term
Reactivity:	Human, Mouse, Rat
Host:	Rabbit
Clonality:	Polyclonal
Conjugate:	This SPTLC2 antibody is un-conjugated
Application:	Western Blotting (WB), ELISA, Immunocytochemistry (ICC)

Product Details

Purpose:	Rabbit polyclonal antibody raised against synthetic peptide of SPTLC2.
Immunogen:	A synthetic peptide corresponding to 15 amino acids near C-terminus of human SPTLC2.
Specificity:	At least three isoforms of SPTLC2 are known to exist, this antibody will not detect isoform b. This antibody is predicted to not cross-react with SPT1.
Cross-Reactivity:	Human, Mouse, Rat

Target Details

Target:	SPTLC2
Alternative Name:	SPTLC2 (SPTLC2 Products)
Background:	Full Gene Name: serine palmitoyltransferase, long chain base subunit 2

Target Details

	Synonyms: KIAA0526,LCB2,SPT2
Gene ID:	9517

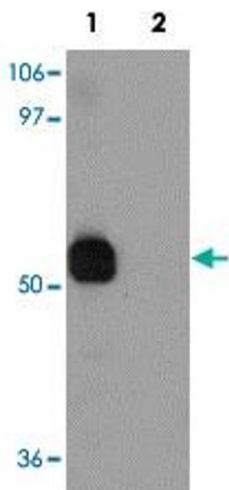
Application Details

Application Notes:	Western Blot (1 µg/mL) Immunocytochemistry (10 µg/mL) The optimal working dilution should be determined by the end user.
Restrictions:	For Research Use only

Handling

Format:	Liquid
Concentration:	1 mg/mL
Buffer:	In PBS (0.02 % sodium azide)
Preservative:	Sodium azide
Precaution of Use:	This product contains Sodium azide: a POISONOUS AND HAZARDOUS SUBSTANCE which should be handled by trained staff only.
Storage:	4 °C,-20 °C
Storage Comment:	Store at 4°C for three months. For long term storage store at -20°C. Aliquot to avoid repeated freezing and thawing.

Images



Western Blotting

Image 1. Western blot analysis of SPTLC2 in NIH/3T3 cell lysate with SPTLC2 polyclonal antibody at 1 ug/mL in (1) the absence and (2) the presence of blocking peptide.



Immunocytochemistry

Image 2. Immunocytochemical staining of 3T3 cells with SPTLC2 polyclonal antibody at 10 ug/mL.