

Datasheet for ABIN5588885
anti-STEAP4 antibody (N-Term)[Go to Product page](#)

1 Image

Overview

Quantity:	50 µg
Target:	STEAP4
Binding Specificity:	N-Term
Reactivity:	Human
Host:	Rabbit
Clonality:	Polyclonal
Conjugate:	This STEAP4 antibody is un-conjugated
Application:	Immunohistochemistry (Paraffin-embedded Sections) (IHC (p))

Product Details

Purpose:	Rabbit polyclonal antibody raised against synthetic peptide of STEAP4.
Immunogen:	A synthetic peptide corresponding to 15 amino acids at N-terminus region of human STEAP4.
Specificity:	BLAST analysis of the peptide immunogen showed no homology with other human proteins.
Cross-Reactivity:	Human
Cross-Reactivity (Details):	BLAST analysis of the peptide immunogen showed no homology with other human proteins.

Target Details

Target:	STEAP4
Alternative Name:	STEAP4 (STEAP4 Products)
Background:	Full Gene Name: STEAP family member 4

Target Details

Synonyms: DKFZp666D049,FLJ23153,STAMP2,TIARP,TNFAIP9

Gene ID: 79689

Pathways: [Transition Metal Ion Homeostasis](#)

Application Details

Application Notes: Immunohistochemistry (Formalin/PFA-fixed paraffin-embedded sections) (2.5 µg/mL)

Restrictions: For Research Use only

Handling

Format: Liquid

Buffer: In PBS (0.09 % sodium azide)

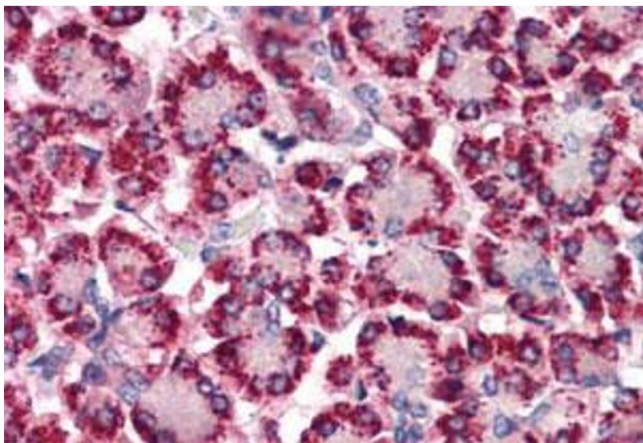
Preservative: Sodium azide

Precaution of Use: This product contains Sodium azide: a POISONOUS AND HAZARDOUS SUBSTANCE which should be handled by trained staff only.

Storage: 4 °C,-80 °C

Storage Comment: Store at 4°C. For long term storage store at -80°C.
Aliquot to avoid repeated freezing and thawing.

Images



Immunohistochemistry

Image 1. Immunohistochemistry (Formalin/PFA-fixed paraffin-embedded sections) of human pancreas with STEAP4 polyclonal antibody . Immunohistochemistry of formalin-fixed, paraffin-embedded tissue after heat-induced antigen retrieval.