

Datasheet for ABIN5588902
anti-STK39 antibody (pSer309)[Go to Product page](#)

2 Images

Overview

Quantity:	100 µL
Target:	STK39
Binding Specificity:	pSer309
Reactivity:	Human, Mouse, Rat
Host:	Rabbit
Clonality:	Polyclonal
Conjugate:	This STK39 antibody is un-conjugated
Application:	Western Blotting (WB), Immunohistochemistry (Paraffin-embedded Sections) (IHC (p))

Product Details

Purpose:	Rabbit polyclonal antibody raised against synthetic phosphopeptide of human STK39.
Immunogen:	Synthetic phosphopeptide (conjugated with KLH) corresponding to residues surrounding S309 of human STK39.
Specificity:	This antibody detects endogenous levels of STK39 only when phosphorylated at serine 309.
Cross-Reactivity:	Human, Mouse, Rat

Target Details

Target:	STK39
Alternative Name:	STK39 (STK39 Products)
Background:	Full Gene Name: serine threonine kinase 39 (STE20/SPS1 homolog, yeast)

Target Details

Synonyms: DCHT,DKFZp686K05124,PASK,SPAK

Gene ID: 27347

Application Details

Application Notes: Immunohistochemistry (1:50-1:100)
Western Blot (1:500-1000)
The optimal working dilution should be determined by the end user.

Restrictions: For Research Use only

Handling

Format: Liquid

Buffer: In PBS, pH 7.4 (without Mg^{2+} and Ca^{2+}), (50 % glycerol, 0.02 % sodium azide)

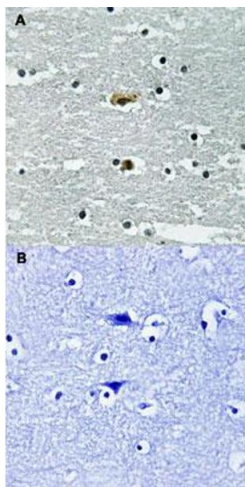
Preservative: Sodium azide

Precaution of Use: This product contains Sodium azide: a POISONOUS AND HAZARDOUS SUBSTANCE which should be handled by trained staff only.

Storage: -20 °C

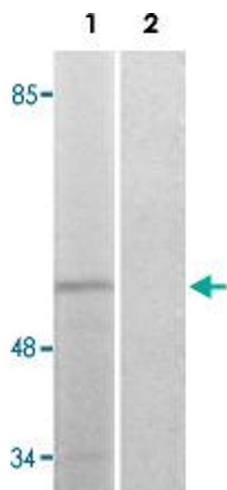
Storage Comment: Store at -20°C.
Avoid repeated freezing and thawing.

Images



Immunohistochemistry

Image 1. Immunohistochemical staining of human brain tissue by STK39 (phospho S309) polyclonal antibody without blocking peptide (A) or preincubated with blocking peptide (B).



Western Blotting

Image 2. Western blot analysis of Lane 1: COLO205 cells
Lane 2: antigen-specific peptide treated COLO205 cells with
STK39 (phospho S309) polyclonal antibody .