



[Go to Product page](#)

Datasheet for ABIN5588925
anti-STOX1 antibody (C-Term)

1 Image

Overview

Quantity:	100 µg
Target:	STOX1
Binding Specificity:	C-Term
Reactivity:	Human
Host:	Rabbit
Clonality:	Polyclonal
Conjugate:	This STOX1 antibody is un-conjugated
Application:	ELISA, Western Blotting (WB), Immunofluorescence (IF)

Product Details

Purpose:	Rabbit polyclonal antibody raised against synthetic peptide of STOX1.
Immunogen:	A synthetic peptide corresponding to 14 amino acids at C-terminus of human STOX1.
Isotype:	IgG
Specificity:	STOX1 antibody is human reactive. At least three alternatively spliced transcript variants encoding distinct isoforms have been observed. STOX1 antibody recognize the longest isoform.
Cross-Reactivity:	Human

Target Details

Target:	STOX1
---------	-------

Target Details

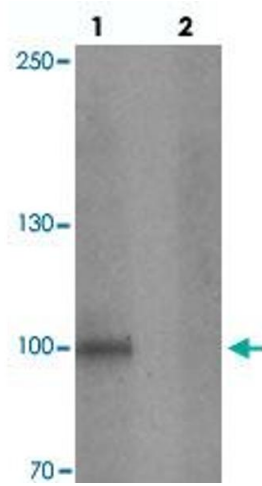
Alternative Name:	STOX1 (STOX1 Products)
Background:	Full Gene Name: storkhead box 1 Synonyms: C10orf24,PEE4
Gene ID:	219736

Application Details

Application Notes:	Western Blot (1 µg/mL) The optimal working dilution should be determined by the end user.
Restrictions:	For Research Use only

Handling

Format:	Liquid
Concentration:	1 mg/mL
Buffer:	In PBS (0.02 % sodium azide)
Preservative:	Sodium azide
Precaution of Use:	This product contains Sodium azide: a POISONOUS AND HAZARDOUS SUBSTANCE which should be handled by trained staff only.
Storage:	4 °C,-20 °C
Storage Comment:	Store at 4°C for three months. For long term storage store at -20°C. Aliquot to avoid repeated freezing and thawing.



Western Blotting

Image 1. Western blot analysis of STOX1 in human liver tissue with STOX1 polyclonal antibody at 1 ug/mL in (lane 1) the absence and (lane 2) the presence of blocking peptide.