

Datasheet for ABIN5588996
anti-SUMO2 antibody (AA 1-93)[Go to Product page](#)

3 Images

Overview

Quantity:	100 µL
Target:	SUMO2
Binding Specificity:	AA 1-93
Reactivity:	Human
Host:	Mouse
Clonality:	Monoclonal
Conjugate:	This SUMO2 antibody is un-conjugated
Application:	Western Blotting (WB), ELISA, Immunofluorescence (IF), Flow Cytometry (FACS), Immunohistochemistry (Paraffin-embedded Sections) (IHC (p)), Immunocytochemistry (ICC)

Product Details

Purpose:	Mouse monoclonal antibody raised against partial recombinant SUMO2.
Immunogen:	Recombinant protein corresponding to amino acids 1-93 of human SUMO2.
Clone:	AT10F1
Isotype:	IgG2b
Cross-Reactivity:	Human

Target Details

Target:	SUMO2
Alternative Name:	SUMO2 (SUMO2 Products)

Target Details

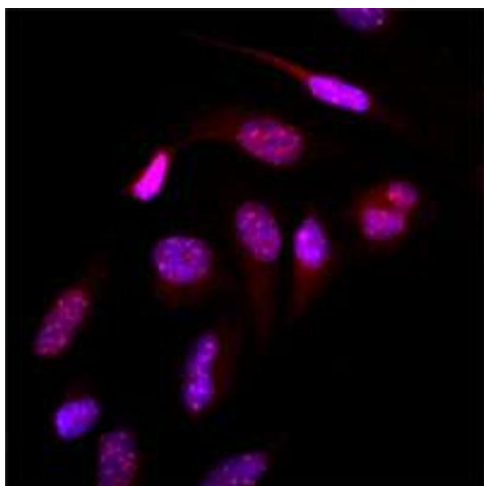
Background:	Full Gene Name: SMT3 suppressor of mif two 3 homolog 2 (<i>S. cerevisiae</i>) Synonyms: HSMT3,MGC117191,SMT3B,SMT3H2
Gene ID:	6613
Pathways:	Methionine Biosynthetic Process

Application Details

Application Notes:	ELISA (1:250) Immunofluorescence (1:250-1:500) Western Blot (1:250-1:500) The optimal working dilution should be determined by the end user.
Restrictions:	For Research Use only

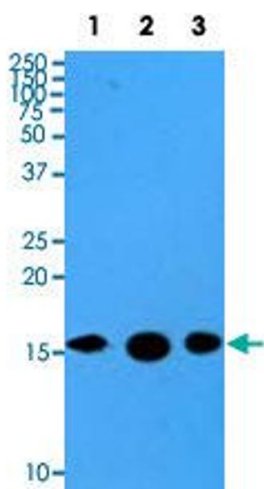
Handling

Format:	Liquid
Concentration:	1 mg/mL
Buffer:	In PBS, pH 7.4 (10 % glycerol, 0.02 % sodium azide).
Preservative:	Sodium azide
Precaution of Use:	This product contains Sodium azide: a POISONOUS AND HAZARDOUS SUBSTANCE which should be handled by trained staff only.
Storage:	-20 °C,-80 °C
Storage Comment:	Store at 2°C to 8°C for 1 week. For long term storage, aliquot and store at -20°C to -80°C. Aliquot to avoid repeated freezing and thawing.



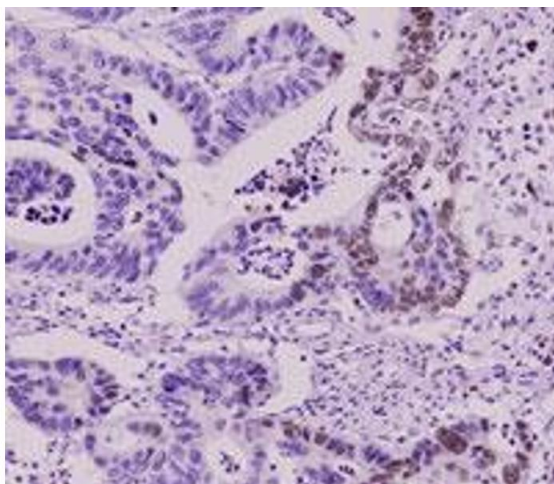
Immunofluorescence

Image 1. Immunofluorescence of human HeLa cells stained with Hoechst 3342 (Blue) for nucleus staining and SUMO2 monoclonal antibody, clone AT10F1 (1 : 500) with Texas Red (Red).



Western Blotting

Image 2. Western blot analysis of cell lysates of HeLa (35 ug) and recombinant proteins (10 ng) were resolved by SDS-PAGE, transferred to PVDF membrane and probed with SUMO2 monoclonal antibody, clone AT10F1 (1 : 500). Proteins were visualized using a goat anti-mouse secondary antibody conjugated to HRP and an ECL detection system. Lane 1: HeLa Lane 2: Sumo 2 Lane 3: Sumo 3



Immunohistochemistry

Image 3. Immunohistochemistry paraffin embedded sections of human colorectal cancer tissue were incubated with SUMO2 monoclonal antibody, clone AT10F1 (1 : 50) for 2 hours at room temperature. Antigen retrieval was performed in 0.1 M sodium citrate buffer and detected using Diaminobenzidine (DAB).