



Datasheet for ABIN5589014
anti-SUSD2 antibody



[Go to Product page](#)

1 Image

Overview

Quantity:	100 µL
Target:	SUSD2
Reactivity:	Human
Host:	Rabbit
Clonality:	Polyclonal
Conjugate:	This SUSD2 antibody is un-conjugated
Application:	Immunohistochemistry (Paraffin-embedded Sections) (IHC (p))

Product Details

Purpose:	Rabbit polyclonal antibody raised against recombinant human SUSD2.
Immunogen:	Recombinant protein corresponding to human SUSD2.
Sequence:	MDLKGMFLSV AAGDRVSIML ASGAGLEVSV QGPFLSVSVL LPEKFLTHTH GLLGTLNNDP TDDFTLHSGR VLPPGTSPQE LFLFGANWTV HNASSLLTYD SWFLVHNFLY QPKHDPTFEP LFPSETTLNP SLAQEAAKLC GDDHFCNF
Isotype:	IgG
Cross-Reactivity:	Human

Target Details

Target:	SUSD2
Alternative Name:	SUSD2 (SUSD2 Products)

Target Details

Background: Full Gene Name: sushi domain containing 2
Synonyms: BK65A6.2,FLJ22778

Gene ID: 56241

Application Details

Application Notes: Immunohistochemistry (1:200-1:500)
The optimal working dilution should be determined by the end user.

Restrictions: For Research Use only

Handling

Format: Liquid

Buffer: In PBS, pH 7.2 (40 % glycerol, 0.02 % sodium azide)

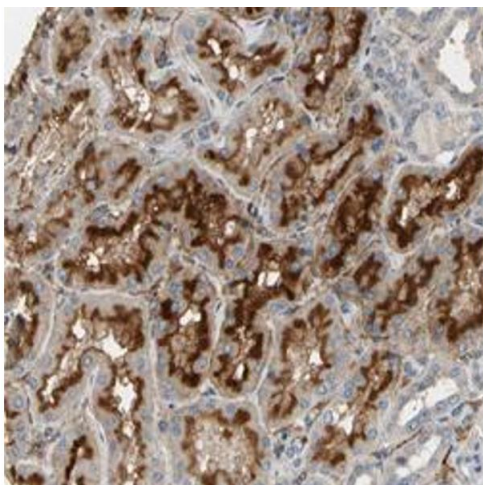
Preservative: Sodium azide

Precaution of Use: This product contains Sodium azide: a POISONOUS AND HAZARDOUS SUBSTANCE which should be handled by trained staff only.

Storage: 4 °C,-20 °C

Storage Comment: Store at 4°C. For long term storage store at -20°C.
Aliquot to avoid repeated freezing and thawing.

Images



Immunohistochemistry

Image 1. Immunohistochemical staining of human kidney with SUSD2 polyclonal antibody show strong cytoplasmic and membranous positivity in cells in tubules at 1:200-1:500 dilution.