



[Go to Product page](#)

Datasheet for ABIN5589042

anti-SYCP2L antibody

2 Images

Overview

Quantity:	100 µL
Target:	SYCP2L
Reactivity:	Human
Host:	Rabbit
Clonality:	Polyclonal
Conjugate:	This SYCP2L antibody is un-conjugated
Application:	Immunofluorescence (IF), Immunohistochemistry (Paraffin-embedded Sections) (IHC (p))

Product Details

Purpose:	Rabbit polyclonal antibody raised against recombinant SYCP2L.
Immunogen:	Recombinant protein corresponding to amino acids of human SYCP2L.
Sequence:	TSMICVIEDF FDTALIISRS SSEGKIQLMD SFLLSLGFLV TEKTVNHLLQ QEGLKTFNCI LHAVPREERK KFPLSEGMCH LMKDLARTLL TVGDYDQV
Isotype:	IgG
Cross-Reactivity:	Human

Target Details

Target:	SYCP2L
Alternative Name:	SYCP2L (SYCP2L Products)
Background:	Full Gene Name: synaptonemal complex protein 2-like

Target Details

Synonyms: C6orf177,N0145,dJ62D2.1

Gene ID: 221711

Application Details

Application Notes: Immunohistochemistry (1:200-1:500)
Immunofluorescence (1-4 µg/mL)
The optimal working dilution should be determined by the end user.

Restrictions: For Research Use only

Handling

Format: Liquid

Buffer: In PBS, pH 7.2 (40 % glycerol, 0.02 % sodium azide)

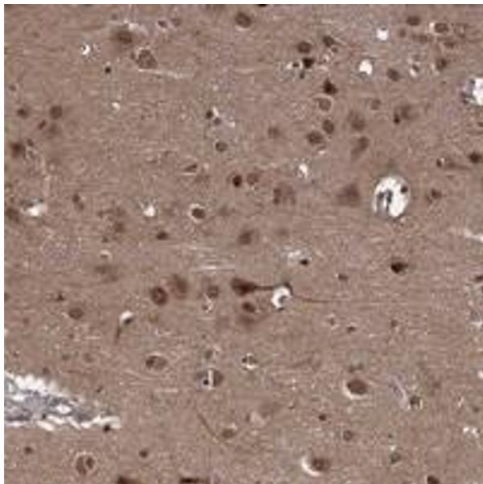
Preservative: Sodium azide

Precaution of Use: This product contains Sodium azide: a POISONOUS AND HAZARDOUS SUBSTANCE which should be handled by trained staff only.

Storage: 4 °C,-20 °C

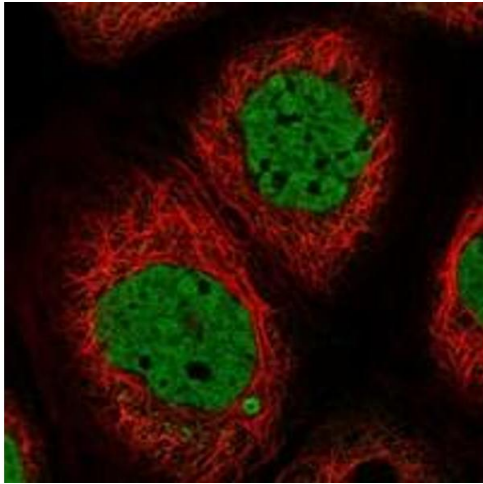
Storage Comment: Store at 4°C. For long term storage store at -20°C.
Aliquot to avoid repeated freezing and thawing.

Images



Immunohistochemistry

Image 1. Immunohistochemical staining of human cerebral cortex with SYCP2L polyclonal antibody shows distinct cytoplasmic and nuclear positivity in neuronal cells at 1:200-1:500 dilution.



Immunofluorescence

Image 2. Immunofluorescent staining of human cell line A-431 with SYCP2L polyclonal antibody at 1-4 ug/mL dilution shows positivity in nucleus but not nucleoli.