

Datasheet for ABIN5589080

**anti-SYNGR2 antibody (Internal Region)****2** Images[Go to Product page](#)

## Overview

Quantity:	50 µg
Target:	SYNGR2
Binding Specificity:	Internal Region
Reactivity:	Human, Rat, Mouse, Cow, Hamster, Horse, Orang-Utan
Host:	Rabbit
Clonality:	Polyclonal
Conjugate:	This SYNGR2 antibody is un-conjugated
Application:	Immunohistochemistry (Paraffin-embedded Sections) (IHC (p))

## Product Details

Purpose:	Rabbit polyclonal antibody raised against synthetic peptide of SYNGR2.
Immunogen:	A synthetic peptide corresponding to 18 amino acids at internal region of human SYNGR2.
Specificity:	BLAST analysis of the peptide immunogen showed no homology with other human proteins.
Cross-Reactivity:	Cow, Hamster, Horse, Human, Mouse, Orang-Utan, Rat
Cross-Reactivity (Details):	BLAST analysis of the peptide immunogen showed no homology with other human proteins.

## Target Details

Target:	SYNGR2
Alternative Name:	SYNGR2 ( <a href="#">SYNGR2 Products</a> )
Background:	Full Gene Name: synaptogyrin 2

## Target Details

Synonyms: MGC102914

Gene ID: 9144

## Application Details

Application Notes: Immunohistochemistry (Formalin/PFA-fixed paraffin-embedded sections) (15-20 µg/mL)

Restrictions: For Research Use only

## Handling

Format: Liquid

Buffer: In PBS (0.09 % sodium azide)

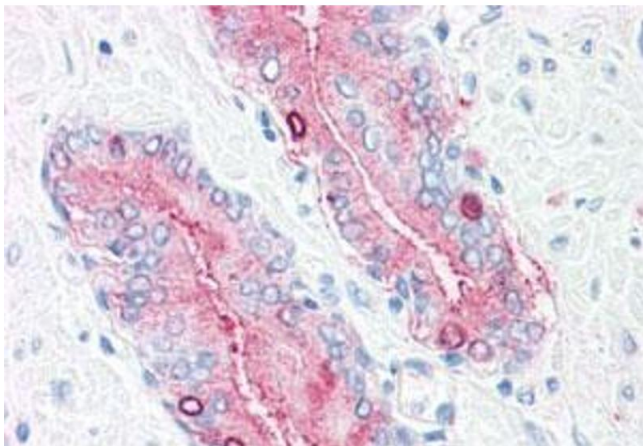
Preservative: Sodium azide

Precaution of Use: This product contains Sodium azide: a POISONOUS AND HAZARDOUS SUBSTANCE which should be handled by trained staff only.

Storage: 4 °C, -80 °C

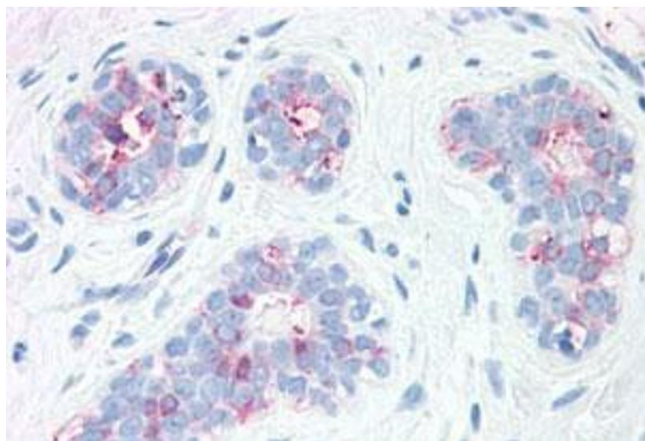
Storage Comment: Store at 4°C. For long term storage store at -80°C.  
Aliquot to avoid repeated freezing and thawing.

## Images



### Immunohistochemistry

**Image 1.** Immunohistochemistry (Formalin/PFA-fixed paraffin-embedded sections) of human prostate with SYNGR2 polyclonal antibody . Immunohistochemistry of formalin-fixed, paraffin-embedded tissue after heat-induced antigen retrieval.



#### Immunohistochemistry

**Image 2.** Immunohistochemistry (Formalin/PFA-fixed paraffin-embedded sections) of human breast with SYNGR2 polyclonal antibody . Immunohistochemistry of formalin-fixed, paraffin-embedded tissue after heat-induced antigen retrieval.