



[Go to Product page](#)

Datasheet for ABIN5589116

## anti-SYTL1 antibody

### 2 Images

#### Overview

Quantity:	100 µL
Target:	SYTL1
Reactivity:	Human
Host:	Rabbit
Clonality:	Polyclonal
Conjugate:	This SYTL1 antibody is un-conjugated
Application:	Western Blotting (WB), Immunohistochemistry (Paraffin-embedded Sections) (IHC (p))

#### Product Details

Purpose:	Rabbit polyclonal antibody raised against recombinant SYTL1.
Immunogen:	Recombinant protein corresponding to amino acids of human SYTL1.
Sequence:	EAIAGVLQRD ARLRQLEEGR VSKLRASVAD PGQLKILTGD WFQEARSQRH HNAHFGSDLV RASMRRKKST RGDQAPGHDR EAEAAVKEK
Isotype:	IgG
Cross-Reactivity:	Human

#### Target Details

Target:	SYTL1
Alternative Name:	SYTL1 ( <a href="#">SYTL1 Products</a> )
Background:	Full Gene Name: synaptotagmin-like 1

## Target Details

Synonyms: FLJ14996,JFC1,SLP1

Gene ID: 84958

## Application Details

Application Notes: Immunohistochemistry (1:500-1:1000)  
Western Blot (1:250-1:500)  
The optimal working dilution should be determined by the end user.

Restrictions: For Research Use only

## Handling

Format: Liquid

Buffer: In PBS, pH 7.2 (40 % glycerol, 0.02 % sodium azide)

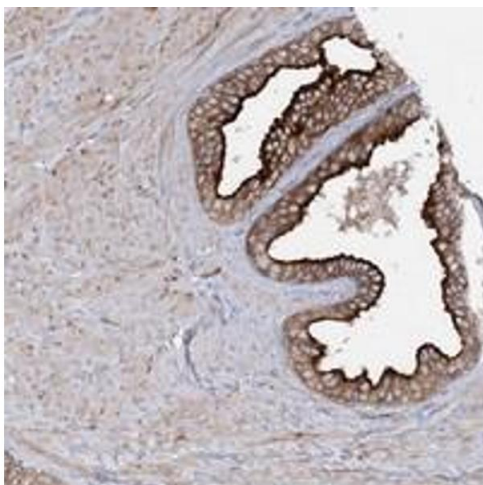
Preservative: Sodium azide

Precaution of Use: This product contains Sodium azide: a POISONOUS AND HAZARDOUS SUBSTANCE which should be handled by trained staff only.

Storage: 4 °C,-20 °C

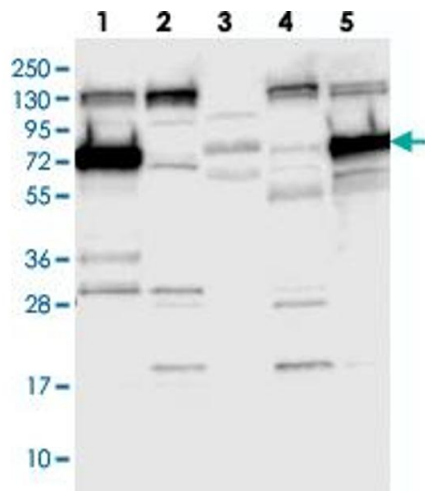
Storage Comment: Store at 4°C. For long term storage store at -20°C.  
Aliquot to avoid repeated freezing and thawing.

## Images



### Immunohistochemistry

**Image 1.** Immunohistochemical staining of human prostate with SYTL1 polyclonal antibody shows strong cytoplasmic and membranous positivity in glandular cells.



### Western Blotting

**Image 2.** Western blot analysis of Lane 1: RT-4, Lane 2: U-251 MG, Lane 3: Human Plasma, Lane 4: Liver, Lane 5: Tonsil with SYTL1 polyclonal antibody .