

Datasheet for ABIN5589132
anti-TAAR6 antibody (Cytoplasmic Domain)[Go to Product page](#)

1 Image

Overview

Quantity:	50 µg
Target:	TAAR6
Binding Specificity:	Cytoplasmic Domain
Reactivity:	Human, Chimpanzee
Host:	Rabbit
Clonality:	Polyclonal
Conjugate:	This TAAR6 antibody is un-conjugated
Application:	Immunohistochemistry (Paraffin-embedded Sections) (IHC (p))

Product Details

Purpose:	Rabbit polyclonal antibody raised against synthetic peptide of TAAR6.
Immunogen:	A synthetic peptide corresponding to 16 amino acid at cytoplasmic domain of human TAAR6.
Specificity:	BLAST analysis of the peptide immunogen showed no homology with other human proteins.
Cross-Reactivity:	Chimpanzee, Human
Cross-Reactivity (Details):	BLAST analysis of the peptide immunogen showed no homology with other human proteins.

Target Details

Target:	TAAR6
Alternative Name:	TAAR6 (TAAR6 Products)
Background:	Full Gene Name: trace amine associated receptor 6

Target Details

	Synonyms: RP11-295F4.3,SCZD5,TA4,TRAR4
Gene ID:	319100

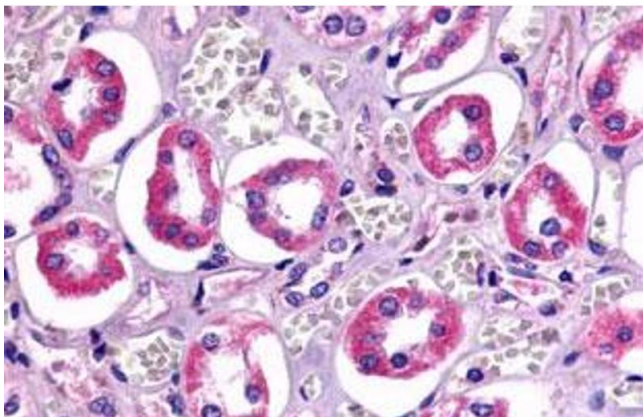
Application Details

Application Notes:	Immunohistochemistry (Formalin/PFA-fixed paraffin-embedded sections) (3-7 µg/mL) The optimal working dilution should be determined by the end user.
Restrictions:	For Research Use only

Handling

Format:	Liquid
Buffer:	In PBS (0.09 % sodium azide)
Preservative:	Sodium azide
Precaution of Use:	This product contains Sodium azide: a POISONOUS AND HAZARDOUS SUBSTANCE which should be handled by trained staff only.
Storage:	4 °C,-80 °C
Storage Comment:	Store at 4°C. For long term storage store at -80°C. Aliquot to avoid repeated freezing and thawing.

Images



Immunohistochemistry

Image 1. Immunohistochemistry (Formalin/PFA-fixed paraffin-embedded sections) of human kidney, renal tubules with TAAR6 polyclonal antibody . Immunohistochemistry of formalin-fixed, paraffin-embedded tissue after heat-induced antigen retrieval.