



Datasheet for ABIN5589270
anti-TCHHL1 antibody



[Go to Product page](#)

1 Image

Overview

Quantity:	100 µL
Target:	TCHHL1
Reactivity:	Human
Host:	Rabbit
Clonality:	Polyclonal
Conjugate:	This TCHHL1 antibody is un-conjugated
Application:	Immunohistochemistry (Paraffin-embedded Sections) (IHC (p))

Product Details

Purpose:	Rabbit polyclonal antibody raised against recombinant TCHHL1.
Immunogen:	Recombinant protein corresponding to amino acids of human TCHHL1.
Sequence:	KHSNIQEPL QREDEPSSQH ADLPEQAAAR SPSQTQKSTD SKDVCRMFD T QEPGKDAQT PAKTKNLGEP EDYGRTSETQ EKECETKDLP VQYGSRN
Isotype:	IgG
Cross-Reactivity:	Human

Target Details

Target:	TCHHL1
Alternative Name:	TCHHL1 (TCHHL1 Products)
Background:	Full Gene Name: trichohyalin-like 1

Target Details

Synonyms: S100A17,THHL1,basalin

Gene ID: 126637

Application Details

Application Notes: Immunohistochemistry (1:500-1:1000)
The optimal working dilution should be determined by the end user.

Restrictions: For Research Use only

Handling

Format: Liquid

Buffer: In PBS, pH 7.2 (40 % glycerol, 0.02 % sodium azide)

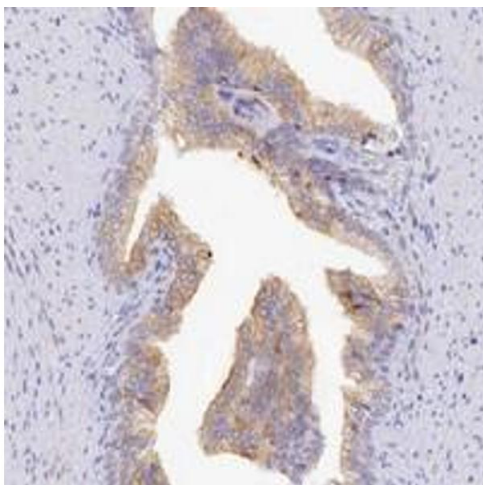
Preservative: Sodium azide

Precaution of Use: This product contains Sodium azide: a POISONOUS AND HAZARDOUS SUBSTANCE which should be handled by trained staff only.

Storage: 4 °C,-20 °C

Storage Comment: Store at 4°C. For long term storage store at -20°C.
Aliquot to avoid repeated freezing and thawing.

Images



Immunohistochemistry

Image 1. Immunohistochemical staining of human prostate with TCHHL1 polyclonal antibody shows moderate cytoplasmic positivity in glandular cells.