



[Go to Product page](#)

Datasheet for ABIN5589279  
**anti-TCRb antibody (Biotin)**

1 Image

### Overview

Quantity:	500 µg
Target:	TCRb
Reactivity:	Mouse
Host:	Hamster
Clonality:	Monoclonal
Conjugate:	This TCRb antibody is conjugated to Biotin
Application:	Flow Cytometry (FACS), Immunohistochemistry (Frozen Sections) (IHC (fro)), Immunohistochemistry (Paraffin-embedded Sections) (IHC (p))

### Product Details

Purpose:	Hamster monoclonal antibody raised against native Tcrb.
Immunogen:	Native purified mouse Tcrb.
Clone:	H57-597
Isotype:	IgG
Specificity:	Common epitope of the beta chain of the mouse alphabeta T cell receptor (TCR) complex.
Cross-Reactivity:	Mouse

### Target Details

Target:	TCRb
Alternative Name:	Tcrb ( <a href="#">TCRb Products</a> )

## Target Details

Background: Full Gene Name: T-cell receptor beta chain  
Synonyms: Tib

Gene ID: 21577

## Application Details

Application Notes: Flow Cytometry (2  $\mu\text{g}/10^6$  cells)  
The optimal working dilution should be determined by the end user.

Restrictions: For Research Use only

## Handling

Format: Liquid

Buffer: In PBS (0.09 % sodium azide)

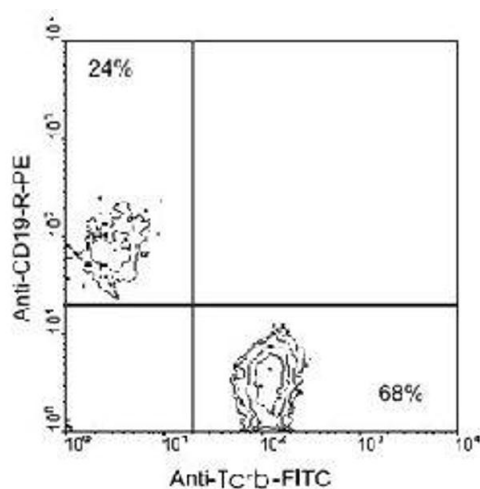
Preservative: Sodium azide

Precaution of Use: This product contains Sodium azide: a POISONOUS AND HAZARDOUS SUBSTANCE which should be handled by trained staff only.

Storage: 4 °C

Storage Comment: Store in the dark at 4°C. Do not freeze.  
Avoid prolonged exposure to light.  
Aliquot to avoid repeated freezing and thawing.

## Images



**Image 1.** BALB/c splenocytes were double-stained with Tcrb monoclonal antibody, clone H57-597 (FITC) and Cd19 monoclonal antibody, clone 6D5 (PE), gated on small lymphocytes and analyzed on a FACScan™ flow cytometer (BDIS, San Jose, CA).