

Datasheet for ABIN5589282
anti-TCRb antibody (PE,Cy5.5)[Go to Product page](#)

1 Image

Overview

Quantity:	100 µg
Target:	TCRb
Reactivity:	Mouse
Host:	Hamster
Clonality:	Monoclonal
Conjugate:	This TCRb antibody is conjugated to PE,Cy5.5
Application:	Flow Cytometry (FACS), Immunohistochemistry (Frozen Sections) (IHC (fro)), Immunohistochemistry (Paraffin-embedded Sections) (IHC (p))

Product Details

Purpose:	Hamster monoclonal antibody raised against native Tcrb.
Immunogen:	Native purified mouse Tcrb.
Clone:	H57-597
Isotype:	IgG
Specificity:	Common epitope of the beta chain of the mouse alphabeta T cell receptor (TCR) complex.
Cross-Reactivity:	Mouse

Target Details

Target:	TCRb
Alternative Name:	Tcrb (TCRb Products)

Target Details

Background: Full Gene Name: T-cell receptor beta chain
Synonyms: Tib

Gene ID: 21577

Application Details

Application Notes: Flow Cytometry (0.2 µg/10⁶ cells)
The optimal working dilution should be determined by the end user.

Restrictions: For Research Use only

Handling

Format: Liquid

Buffer: In PBS (0.09 % sodium azide)

Preservative: Sodium azide

Precaution of Use: This product contains Sodium azide: a POISONOUS AND HAZARDOUS SUBSTANCE which should be handled by trained staff only.

Storage: 4 °C

Storage Comment: Store in the dark at 4°C. Do not freeze.
Avoid prolonged exposure to light.
Aliquot to avoid repeated freezing and thawing.

Images

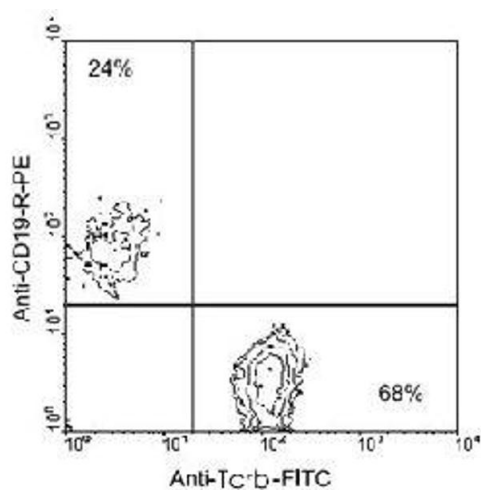


Image 1. BALB/c splenocytes were double-stained with Tcrb monoclonal antibody, clone H57-597 (FITC) and Cd19 monoclonal antibody, clone 6D5 (PE) , gated on small lymphocytes and analyzed on a FACScan™ flow cytometer (BDIS, San Jose, CA).