



Datasheet for ABIN5589335  
**anti-TEX261 antibody**



[Go to Product page](#)

3 Images

### Overview

Quantity:	100 µL
Target:	TEX261
Reactivity:	Human
Host:	Rabbit
Clonality:	Polyclonal
Conjugate:	This TEX261 antibody is un-conjugated
Application:	Western Blotting (WB), Immunohistochemistry (Paraffin-embedded Sections) (IHC (p))

### Product Details

Purpose:	Rabbit polyclonal antibody raised against recombinant TEX261.
Immunogen:	Recombinant protein corresponding to amino acids of human TEX261.
Sequence:	NVLPSTMQPG DDVVSNYFTK GKRKRLGIL VVFSFIKEAI LPSRQKIY
Isotype:	IgG
Cross-Reactivity:	Human, Mouse

### Target Details

Target:	TEX261
Alternative Name:	TEX261 ( <a href="#">TEX261 Products</a> )
Background:	Full Gene Name: testis expressed 261 Synonyms: MGC32043,TEG-261

## Target Details

---

Gene ID: 113419

## Application Details

---

Application Notes: Immunohistochemistry (1:20-1:50)  
Western Blot (1:250-1:500)  
The optimal working dilution should be determined by the end user.

Restrictions: For Research Use only

## Handling

---

Format: Liquid

Buffer: In PBS, pH 7.2 (40 % glycerol, 0.02 % sodium azide)

Preservative: Sodium azide

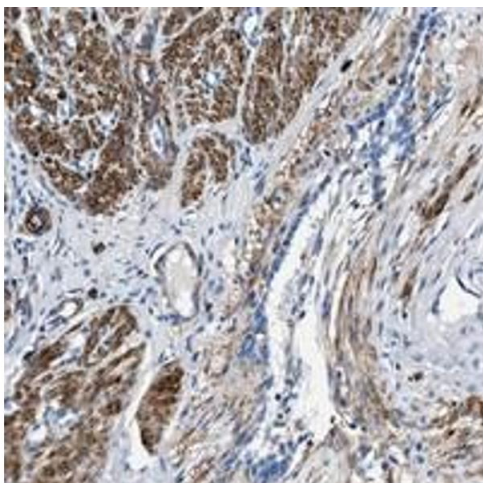
Precaution of Use: This product contains Sodium azide: a POISONOUS AND HAZARDOUS SUBSTANCE which should be handled by trained staff only.

Storage: 4 °C, -20 °C

Storage Comment: Store at 4°C. For long term storage store at -20°C.  
Aliquot to avoid repeated freezing and thawing.

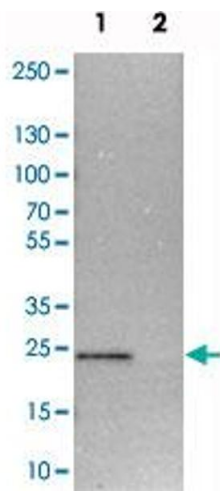
## Images

---



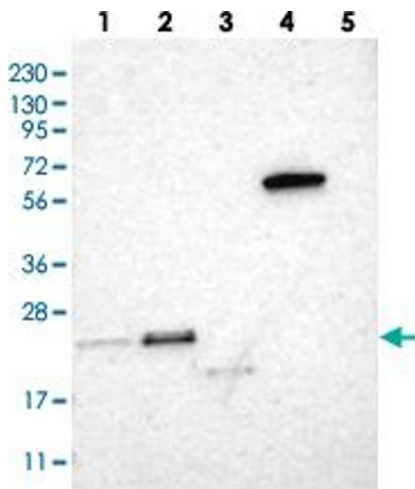
### Immunohistochemistry

**Image 1.** Immunohistochemical staining of human smooth muscle with TEX261 polyclonal antibody shows strong positivity in smooth muscle cells at 1:20-1:50 dilution.



### Western Blotting

**Image 2.** Western blot analysis of cell lysates with TEX261 polyclonal antibody at 1:250-1:500 dilution. Lane 1 : NIH/3T3  
Lane 2 : NBT-II



### Western Blotting

**Image 3.** Western blot analysis of Lane 1: RT-4, Lane 2: U-251 MG, Lane 3: Human Plasma, Lane 4: Liver, Lane 5: Tonsil with TEX261 polyclonal antibody at 1:250-1:500 dilution.