



[Go to Product page](#)

Datasheet for ABIN5589448

anti-Tyrosine Hydroxylase antibody

3 Images

Overview

Quantity:	50 µL
Target:	Tyrosine Hydroxylase (TH)
Reactivity:	Human
Host:	Mouse
Clonality:	Monoclonal
Conjugate:	This Tyrosine Hydroxylase antibody is un-conjugated
Application:	Western Blotting (WB), Immunofluorescence (IF), Immunohistochemistry (Paraffin-embedded Sections) (IHC (p))

Product Details

Purpose:	Mouse monoclonal antibody raised against full length recombinant human TH.
Immunogen:	Recombinant protein corresponding to full length human TH.
Clone:	1D8
Isotype:	IgG1
Cross-Reactivity:	Human

Target Details

Target:	Tyrosine Hydroxylase (TH)
Alternative Name:	tyrosine hydroxylase (TH Products)
Background:	Full Gene Name: tyrosine hydroxylase

Target Details

Synonyms: TYH

Gene ID: 7054

UniProt: [P07101](#)

Pathways: [Dopaminergic Neurogenesis](#), [Response to Water Deprivation](#), [Sensory Perception of Sound](#), [Carbohydrate Homeostasis](#), [Feeding Behaviour](#)

Application Details

Application Notes: Immunofluorescence (1:100)
Immunohistochemistry (Formalin/PFA-fixed paraffin-embedded sections) (10 µg/mL)
Western Blot (1:4000)
The optimal working dilution should be determined by the end user.

Restrictions: For Research Use only

Handling

Format: Liquid

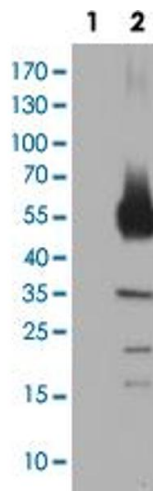
Buffer: In PBS, pH 7.3 (50 % glycerol, 1 % BSA, 0.02 % sodium azide).

Preservative: Sodium azide

Precaution of Use: This product contains Sodium azide: a POISONOUS AND HAZARDOUS SUBSTANCE which should be handled by trained staff only.

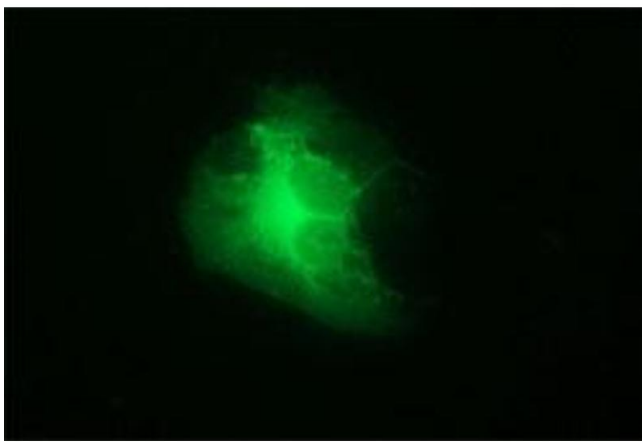
Storage: -20 °C

Storage Comment: Store at -20°C.
Aliquot to avoid repeated freezing and thawing.



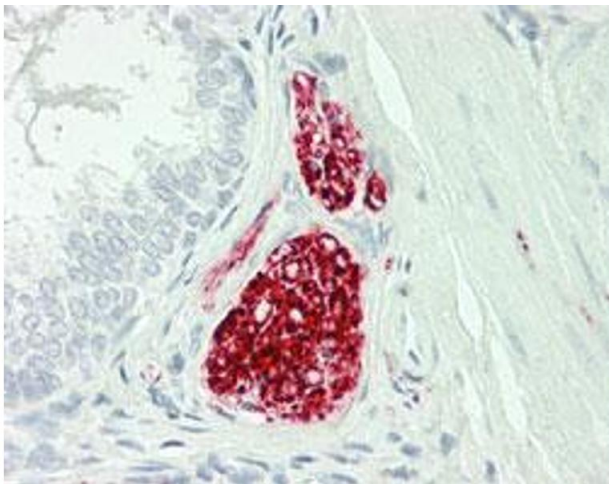
Western Blotting

Image 1. Western Blot analysis of HEK293T cells transfected with the Lane 1: pCMV6-ENTRY control and Lane 2: pCMV6-ENTRY TH cDNA for 48 hrs (5 ug/lane) using TH monoclonal antibody, clone 1D8 .



Immunofluorescence

Image 2. Immunofluorescent staining of COS-7 cells with TH monoclonal antibody, clone 1D8 transiently transfected by pCMV6-ENTRY TH.



Immunohistochemistry

Image 3. Immunohistochemical staining (Formalin-fixed paraffin-embedded sections) of human prostate, nerve with TH monoclonal antibody, clone 1D8 .