



[Go to Product page](#)

Datasheet for ABIN5589517

anti-TIGD6 antibody

2 Images

Overview

Quantity:	100 µL
Target:	TIGD6
Reactivity:	Human
Host:	Rabbit
Clonality:	Polyclonal
Conjugate:	This TIGD6 antibody is un-conjugated
Application:	Immunohistochemistry (Paraffin-embedded Sections) (IHC (p)), Western Blotting (WB)

Product Details

Purpose:	Rabbit polyclonal antibody raised against recombinant TIGD6.
Immunogen:	Recombinant protein corresponding to amino acids of human TIGD6.
Sequence:	MLGYDNFQAS VGWLNRFDR HGIALKAVCR ESDRMLNGL GIDKINEWHA GEIKLIADY SPDDIFNADE TGVFFQLLPQ HTLAAKGDHC RGGKKAKQRL
Isotype:	IgG
Cross-Reactivity:	Human

Target Details

Target:	TIGD6
Alternative Name:	TIGD6 (TIGD6 Products)
Background:	Full Gene Name: tigger transposable element derived 6

Target Details

Synonyms: DKFZp761E2110

Gene ID: 81789

Application Details

Application Notes: Immunohistochemistry (1:200-1:500)
Western Blot (1:250-1:500)
The optimal working dilution should be determined by the end user.

Restrictions: For Research Use only

Handling

Format: Liquid

Buffer: In PBS, pH 7.2 (40 % glycerol, 0.02 % sodium azide)

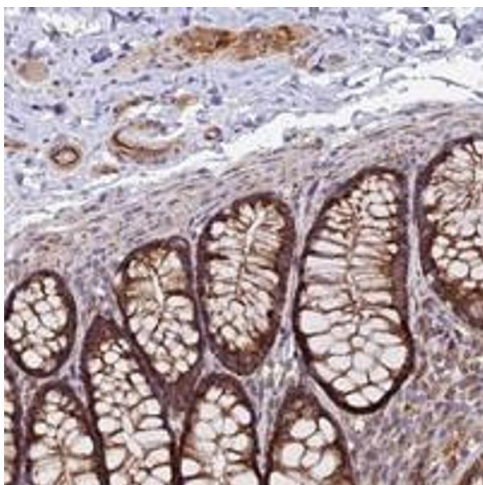
Preservative: Sodium azide

Precaution of Use: This product contains Sodium azide: a POISONOUS AND HAZARDOUS SUBSTANCE which should be handled by trained staff only.

Storage: 4 °C,-20 °C

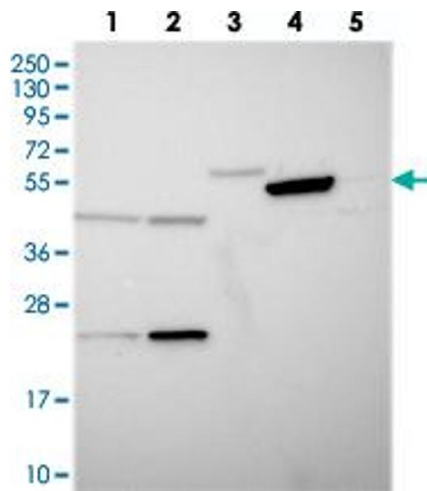
Storage Comment: Store at 4°C. For long term storage store at -20°C.
Aliquot to avoid repeated freezing and thawing.

Images



Immunohistochemistry

Image 1. Immunohistochemical staining of human colon with TIGD6 polyclonal antibody shows strong cytoplasmic positivity in glandular cells, endothelial cells and ganglion cells at 1:200-1:500 dilution.



Western Blotting

Image 2. Western blot analysis of Lane 1: RT-4, Lane 2: U-251 MG, Lane 3: Human Plasma, Lane 4: Liver, Lane 5: Tonsil with TIGD6 polyclonal antibody at 1:250-1:500 dilution.