

Datasheet for ABIN5589584
anti-TM4SF18 antibody (AA 113-141)[Go to Product page](#)

2 Images

Overview

Quantity:	400 µL
Target:	TM4SF18
Binding Specificity:	AA 113-141
Reactivity:	Human
Host:	Rabbit
Clonality:	Polyclonal
Conjugate:	This TM4SF18 antibody is un-conjugated
Application:	Western Blotting (WB), Immunohistochemistry (Paraffin-embedded Sections) (IHC (p))

Product Details

Purpose:	Rabbit polyclonal antibody raised against synthetic peptide of TM4SF18
Immunogen:	A synthetic peptide (conjugated with KLH) corresponding to amino acids 113-141 at Central region at human TM4SF18.
Cross-Reactivity:	Human

Target Details

Target:	TM4SF18
Alternative Name:	TM4SF18 (TM4SF18 Products)
Background:	Full Gene Name: transmembrane 4 L six family member 18 Synonyms: L6D

Target Details

Gene ID: 116441

Application Details

Application Notes: Immunohistochemistry (1:10-50)
Western Blot (1:1000)
The optimal working dilution should be determined by the end user.

Restrictions: For Research Use only

Handling

Format: Liquid

Buffer: In PBS (0.09 % sodium azide)

Preservative: Sodium azide

Precaution of Use: This product contains Sodium azide: a POISONOUS AND HAZARDOUS SUBSTANCE which should be handled by trained staff only.

Storage: 4 °C, -20 °C

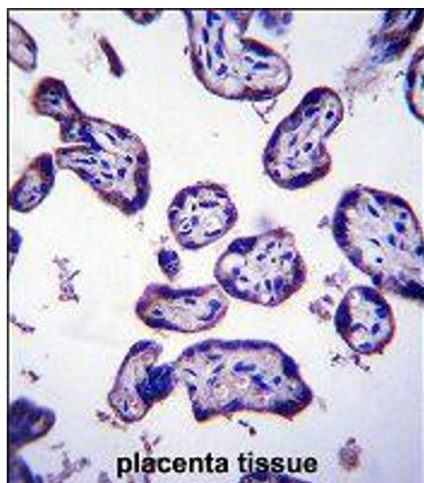
Storage Comment: Store at 4°C. For long term storage store at -20°C.
Aliquot to avoid repeated freezing and thawing.

Images



Western Blotting

Image 1. Western blot analysis of TM4SF18 polyclonal antibody in human placenta tissue lysates (35ug/lane). TM4SF18 (arrow) was detected using the purified polyclonal antibody.



Immunohistochemistry

Image 2. Immunohistochemistry (Formalin/PFA-fixed paraffin-embedded sections) of human placenta tissue with TM4SF18 polyclonal antibody followed by peroxidase conjugation of the secondary antibody and DAB staining.