

Datasheet for ABIN5589588
anti-TM9SF1 antibody (Internal Region)[Go to Product page](#)

2 Images

Overview

Quantity:	50 µg
Target:	TM9SF1
Binding Specificity:	Internal Region
Reactivity:	Human, Mouse, Rat, Dog, Horse, Cow, Pig, Monkey, Hamster, Chimpanzee, Gorilla, Orang-Utan
Host:	Rabbit
Clonality:	Polyclonal
Conjugate:	This TM9SF1 antibody is un-conjugated
Application:	Immunohistochemistry (Paraffin-embedded Sections) (IHC (p))

Product Details

Purpose:	Rabbit polyclonal antibody raised against synthetic peptide of TM9SF1.
Immunogen:	A synthetic peptide corresponding to 19 amino acids at internal region of human TM9SF1.
Specificity:	BLAST analysis of the peptide immunogen showed no homology with other human proteins.
Cross-Reactivity:	Chimpanzee, Cow, Dog, Gorilla, Hamster, Horse, Human, Monkey, Mouse, Orang-Utan, Pig, Rat
Cross-Reactivity (Details):	BLAST analysis of the peptide immunogen showed no homology with other human proteins.

Target Details

Target:	TM9SF1
Alternative Name:	TM9SF1 (TM9SF1 Products)
Background:	Full Gene Name: transmembrane 9 superfamily member 1

Target Details

Synonyms: HMP70,MP70

Gene ID: 10548

Application Details

Application Notes: Immunohistochemistry (Formalin/PFA-fixed paraffin-embedded sections) (15-20 µg/mL)

Restrictions: For Research Use only

Handling

Format: Liquid

Buffer: In PBS (0.09 % sodium azide)

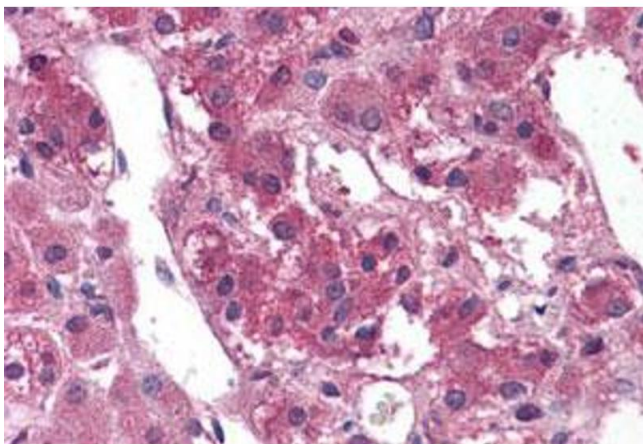
Preservative: Sodium azide

Precaution of Use: This product contains Sodium azide: a POISONOUS AND HAZARDOUS SUBSTANCE which should be handled by trained staff only.

Storage: 4 °C, -80 °C

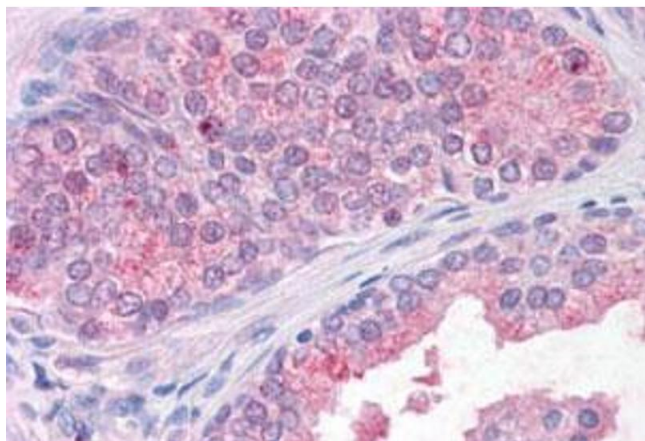
Storage Comment: Store at 4°C. For long term storage store at -80°C.
Aliquot to avoid repeated freezing and thawing.

Images



Immunohistochemistry

Image 1. Immunohistochemistry (Formalin/PFA-fixed paraffin-embedded sections) of human adrenal gland with TM9SF1 polyclonal antibody . Immunohistochemistry of formalin-fixed, paraffin-embedded tissue after heat-induced antigen retrieval.



Immunohistochemistry

Image 2. Immunohistochemistry (Formalin/PFA-fixed paraffin-embedded sections) of human prostate with TM9SF1 polyclonal antibody . Immunohistochemistry of formalin-fixed, paraffin-embedded tissue after heat-induced antigen retrieval.