



[Go to Product page](#)

Datasheet for ABIN5589589

## anti-TM9SF3 antibody (Internal Region)

### 2 Images

#### Overview

Quantity:	50 µg
Target:	TM9SF3
Binding Specificity:	Internal Region
Reactivity:	Human, Mouse, Cow, Horse, Rat, Rabbit, Dog, Guinea Pig, Chicken, Pig, Monkey, Xenopus laevis, Gorilla, Chimpanzee, Orang-Utan
Host:	Rabbit
Clonality:	Polyclonal
Conjugate:	This TM9SF3 antibody is un-conjugated
Application:	Immunohistochemistry (Paraffin-embedded Sections) (IHC (p))

#### Product Details

Purpose:	Rabbit polyclonal antibody raised against synthetic peptide of TM9SF3.
Immunogen:	A synthetic peptide corresponding to 15 amino acids at internal region of human TM9SF3.
Specificity:	BLAST analysis of the peptide immunogen showed no homology with other human proteins.
Cross-Reactivity:	Chicken, Chimpanzee, Cow, Dog, Gorilla, Guinea Pig, Horse, Human, Monkey, Mouse, Orang-Utan, Pig, Rabbit, Rat, Xenopus laevis
Cross-Reactivity (Details):	BLAST analysis of the peptide immunogen showed no homology with other human proteins.

#### Target Details

Target:	TM9SF3
---------	--------

## Target Details

Alternative Name:	TM9SF3 ( <a href="#">TM9SF3 Products</a> )
Background:	Full Gene Name: transmembrane 9 superfamily member 3 Synonyms: EP70-P-iso,RP11-34E5.1,SMBP
Gene ID:	56889

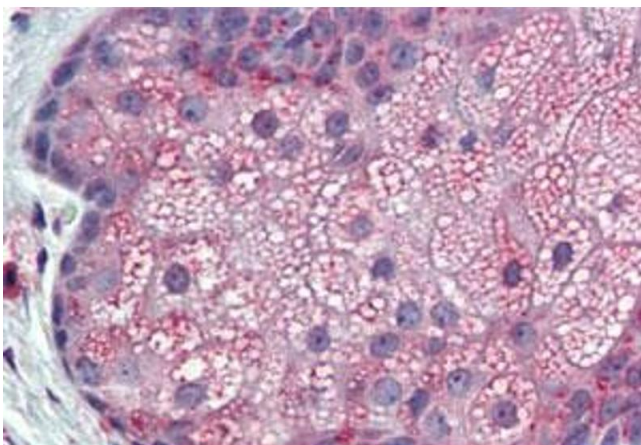
## Application Details

Application Notes:	Immunohistochemistry (Formalin/PFA-fixed paraffin-embedded sections) (10 µg/mL)
Restrictions:	For Research Use only

## Handling

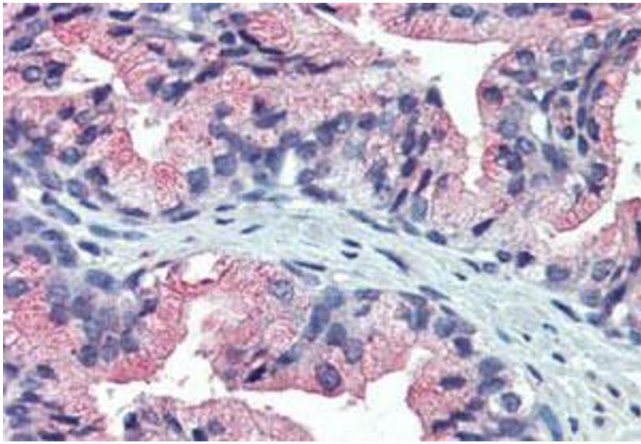
Format:	Liquid
Buffer:	In PBS (0.09 % sodium azide)
Preservative:	Sodium azide
Precaution of Use:	This product contains Sodium azide: a POISONOUS AND HAZARDOUS SUBSTANCE which should be handled by trained staff only.
Storage:	4 °C,-80 °C
Storage Comment:	Store at 4°C. For long term storage store at -80°C. Aliquot to avoid repeated freezing and thawing.

## Images



### Immunohistochemistry

**Image 1.** Immunohistochemistry (Formalin/PFA-fixed paraffin-embedded sections) of human sebaceous gland with TM9SF3 polyclonal antibody . Immunohistochemistry of formalin-fixed, paraffin-embedded tissue after heat-induced antigen retrieval. Antibody dilution 10 µg/ml.



### Immunohistochemistry

**Image 2.** Immunohistochemistry (Formalin/PFA-fixed paraffin-embedded sections) of human prostate with TM9SF3 polyclonal antibody . Immunohistochemistry of formalin-fixed, paraffin-embedded tissue after heat-induced antigen retrieval. Antibody dilution 10 ug/ml.