

Datasheet for ABIN5589591  
**anti-TM9SF4 antibody (Internal Region)**[Go to Product page](#)

## 2 Images

## Overview

Quantity:	50 µg
Target:	TM9SF4
Binding Specificity:	Internal Region
Reactivity:	Mouse, Human, Rabbit, Guinea Pig, Monkey, Orang-Utan, Gorilla, Chimpanzee
Host:	Rabbit
Clonality:	Polyclonal
Conjugate:	This TM9SF4 antibody is un-conjugated
Application:	Immunohistochemistry (Paraffin-embedded Sections) (IHC (p))

## Product Details

Purpose:	Rabbit polyclonal antibody raised against synthetic peptide of TM9SF4.
Immunogen:	A synthetic peptide corresponding to 17 amino acids at internal region of human TM9SF4.
Specificity:	BLAST analysis of the peptide immunogen showed no homology with other human proteins.
Cross-Reactivity:	Chimpanzee, Gorilla, Guinea Pig, Human, Monkey, Mouse, Orang-Utan, Rabbit
Cross-Reactivity (Details):	BLAST analysis of the peptide immunogen showed no homology with other human proteins.

## Target Details

Target:	TM9SF4
Alternative Name:	TM9SF4 ( <a href="#">TM9SF4 Products</a> )
Background:	Full Gene Name: transmembrane 9 superfamily protein member 4

## Target Details

Synonyms: KIAA0255,dJ836N17.2

Gene ID: 9777

## Application Details

Application Notes: Immunohistochemistry (Formalin/PFA-fixed paraffin-embedded sections) (15-20 µg/mL)

Restrictions: For Research Use only

## Handling

Format: Liquid

Buffer: In PBS (0.09 % sodium azide)

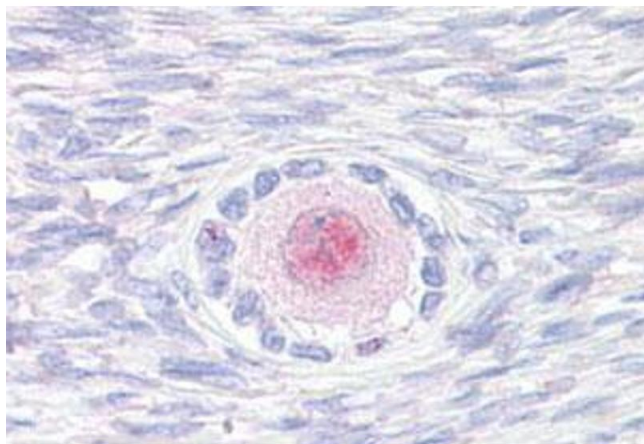
Preservative: Sodium azide

Precaution of Use: This product contains Sodium azide: a POISONOUS AND HAZARDOUS SUBSTANCE which should be handled by trained staff only.

Storage: 4 °C, -80 °C

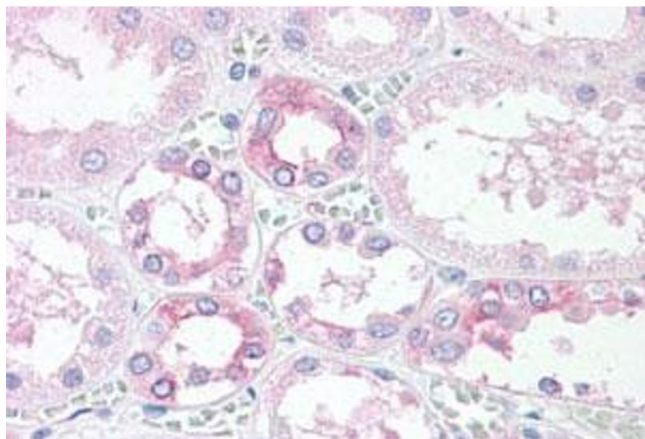
Storage Comment: Store at 4°C. For long term storage store at -80°C.  
Aliquot to avoid repeated freezing and thawing.

## Images



### Immunohistochemistry

**Image 1.** Immunohistochemistry (Formalin/PFA-fixed paraffin-embedded sections) of human ovary with TM9SF4 polyclonal antibody . Immunohistochemistry of formalin-fixed, paraffin-embedded tissue after heat-induced antigen retrieval.



### Immunohistochemistry

**Image 2.** Immunohistochemistry (Formalin/PFA-fixed paraffin-embedded sections) of human kidney with TM9SF4 polyclonal antibody . Immunohistochemistry of formalin-fixed, paraffin-embedded tissue after heat-induced antigen retrieval.