



[Go to Product page](#)

Datasheet for ABIN5589624  
**anti-TMEM109 antibody**

4 Images

### Overview

Quantity:	100 µL
Target:	TMEM109
Reactivity:	Human
Host:	Rabbit
Clonality:	Polyclonal
Conjugate:	This TMEM109 antibody is un-conjugated
Application:	Western Blotting (WB), Immunofluorescence (IF), Immunohistochemistry (Paraffin-embedded Sections) (IHC (p))

### Product Details

Purpose:	Rabbit polyclonal antibody raised against recombinant TMEM109.
Immunogen:	Recombinant protein corresponding to amino acids of human TMEM109.
Sequence:	LEAKVRGLER QVEELRWRQR RAAKGARSVE E
Isotype:	IgG
Cross-Reactivity:	Human, Mouse, Rat

### Target Details

Target:	TMEM109
Alternative Name:	TMEM109 ( <a href="#">TMEM109 Products</a> )
Background:	Full Gene Name: transmembrane protein 109

## Target Details

Synonyms: MGC5508

Gene ID: 79073

## Application Details

Application Notes: Immunohistochemistry (1:500-1:1000)  
Western Blot (1:250-1:500)  
Immunofluorescence (1-4 µg/mL)  
The optimal working dilution should be determined by the end user.

Restrictions: For Research Use only

## Handling

Format: Liquid

Buffer: In PBS, pH 7.2 (40 % glycerol, 0.02 % sodium azide)

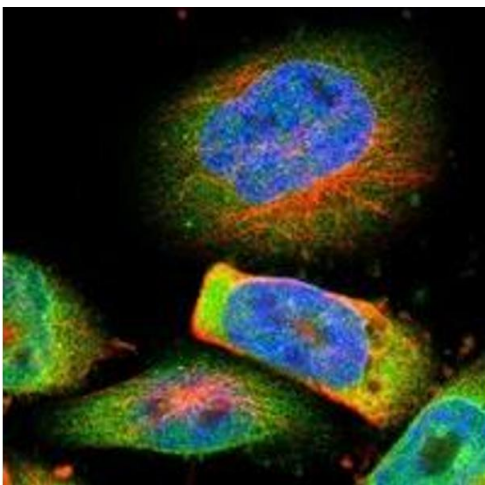
Preservative: Sodium azide

Precaution of Use: This product contains Sodium azide: a POISONOUS AND HAZARDOUS SUBSTANCE which should be handled by trained staff only.

Storage: 4 °C, -20 °C

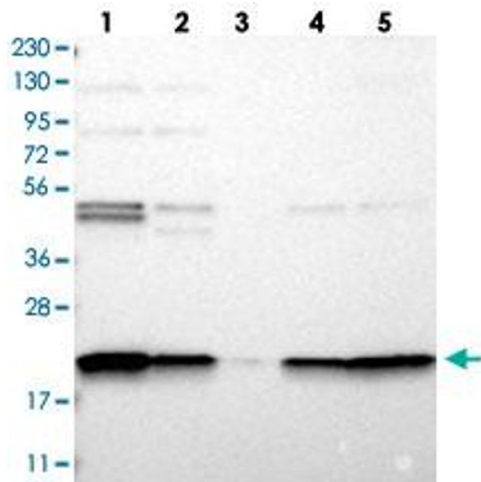
Storage Comment: Store at 4°C. For long term storage store at -20°C.  
Aliquot to avoid repeated freezing and thawing.

## Images



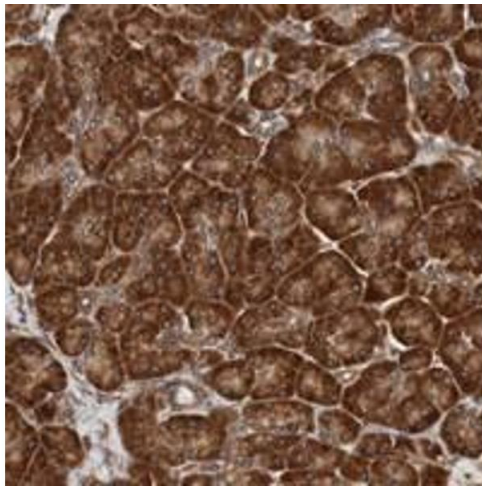
### Immunofluorescence

**Image 1.** Immunofluorescent staining of human cell line U-251 MG with TMEM109 polyclonal antibody at 1-4 µg/mL dilution shows positivity in nucleus but not nucleoli, nuclear membrane, cytoplasm.



### Western Blotting

**Image 2.** Western blot analysis of Lane 1: RT-4, Lane 2: U-251 MG, Lane 3: Human Plasma, Lane 4: Liver, Lane 5: Tonsil with TMEM109 polyclonal antibody at 1:250-1:500 dilution.



### Immunohistochemistry

**Image 3.** Immunohistochemical staining of human pancreas with TMEM109 polyclonal antibody shows strong cytoplasmic positivity in exocrine glandular cells at 1:500-1:1000 dilution.

Please check the [product details page](#) for more images. Overall 4 images are available for ABIN5589624.