

Datasheet for ABIN5589625

anti-EMC3 antibody**1** Image[Go to Product page](#)

Overview

Quantity:	100 µL
Target:	EMC3
Reactivity:	Human
Host:	Rabbit
Clonality:	Polyclonal
Conjugate:	This EMC3 antibody is un-conjugated
Application:	Immunohistochemistry (Paraffin-embedded Sections) (IHC (p))

Product Details

Purpose:	Rabbit polyclonal antibody raised against recombinant TMEM111.
Immunogen:	Recombinant protein corresponding to amino acids of human TMEM111.
Sequence:	QVSDSQVLIR SRVIRENGKY IPKQSFLTRK YYFNNPEDGF FKKTKRKVVP PSPMTDPTM
Isotype:	IgG
Cross-Reactivity:	Human

Target Details

Target:	EMC3
Alternative Name:	TMEM111 (EMC3 Products)
Background:	Full Gene Name: transmembrane protein 111 Synonyms: POB

Target Details

Gene ID: 55831

Application Details

Application Notes: Immunohistochemistry (1:50-1:200)
The optimal working dilution should be determined by the end user.

Restrictions: For Research Use only

Handling

Format: Liquid

Buffer: In PBS, pH 7.2 (40 % glycerol, 0.02 % sodium azide)

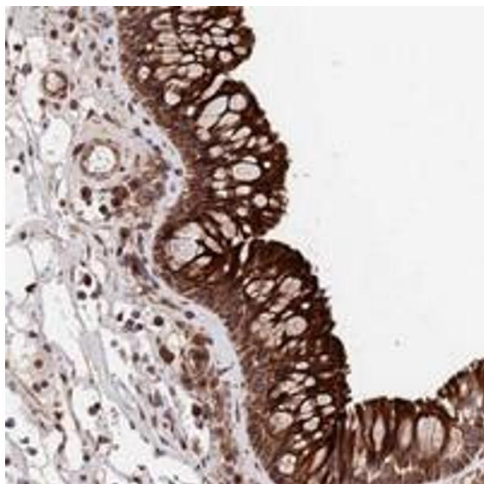
Preservative: Sodium azide

Precaution of Use: This product contains Sodium azide: a POISONOUS AND HAZARDOUS SUBSTANCE which should be handled by trained staff only.

Storage: 4 °C, -20 °C

Storage Comment: Store at 4°C. For long term storage store at -20°C.
Aliquot to avoid repeated freezing and thawing.

Images



Immunohistochemistry

Image 1. Immunohistochemical staining of human nasopharynx with TMEM111 polyclonal antibody shows strong cytoplasmic and membranous positivity in respiratory epithelial cells at 1:50-1:200 dilution.