



[Go to Product page](#)

Datasheet for ABIN5589650
anti-TMEM164 antibody

2 Images

Overview

Quantity:	100 µL
Target:	TMEM164
Reactivity:	Human
Host:	Rabbit
Clonality:	Polyclonal
Conjugate:	This TMEM164 antibody is un-conjugated
Application:	Western Blotting (WB), Immunohistochemistry (Paraffin-embedded Sections) (IHC (p))

Product Details

Purpose:	Rabbit polyclonal antibody raised against recombinant TMEM164.
Immunogen:	Recombinant protein corresponding to amino acids of human TMEM164.
Sequence:	MSRYSYQSLLDWLYGGVDPSFAGNGGPDCA AFLSWQQR
Isotype:	IgG
Cross-Reactivity:	Human

Target Details

Target:	TMEM164
Alternative Name:	TMEM164 (TMEM164 Products)
Background:	Full Gene Name: transmembrane protein 164 Synonyms: FLJ20173,FLJ22679,bB360B22.3

Target Details

Gene ID: 84187

Application Details

Application Notes: Immunohistochemistry (1:50-1:200)
Western Blot (1:250-1:500)
The optimal working dilution should be determined by the end user.

Restrictions: For Research Use only

Handling

Format: Liquid

Buffer: In PBS, pH 7.2 (40 % glycerol, 0.02 % sodium azide)

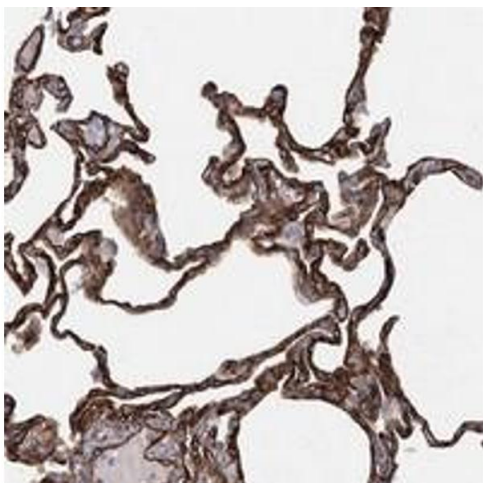
Preservative: Sodium azide

Precaution of Use: This product contains Sodium azide: a POISONOUS AND HAZARDOUS SUBSTANCE which should be handled by trained staff only.

Storage: 4 °C, -20 °C

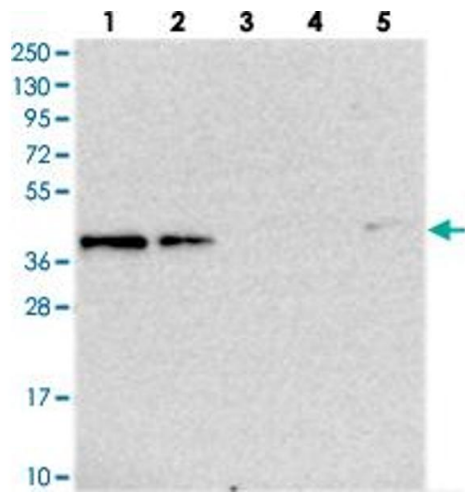
Storage Comment: Store at 4°C. For long term storage store at -20°C.
Aliquot to avoid repeated freezing and thawing.

Images



Immunohistochemistry

Image 1. Immunohistochemical staining of human lung with TMEM164 polyclonal antibody shows strong cytoplasmic and membranous positivity in alveolar cells at 1:50-1:200 dilution.



Western Blotting

Image 2. Western blot analysis of Lane 1: RT-4, Lane 2: U-251 MG, Lane 3: Human Plasma, Lane 4: Liver, Lane 5: Tonsil with TMEM164 polyclonal antibody at 1:250-1:500 dilution.