



[Go to Product page](#)

Datasheet for ABIN5589673
anti-TMEM200A antibody

1 Image

Overview

Quantity:	100 µL
Target:	TMEM200A
Reactivity:	Human
Host:	Rabbit
Clonality:	Polyclonal
Conjugate:	This TMEM200A antibody is un-conjugated
Application:	Immunohistochemistry (Paraffin-embedded Sections) (IHC (p))

Product Details

Purpose:	Rabbit polyclonal antibody raised against recombinant TMEM200A.
Immunogen:	Recombinant protein corresponding to amino acids of human TMEM200A.
Sequence:	EHFIDAETTL STNETQVIRN EGGVVVRRFFE QHLHSDKM
Isotype:	IgG
Cross-Reactivity:	Human

Target Details

Target:	TMEM200A
Alternative Name:	TMEM200A (TMEM200A Products)
Background:	Full Gene Name: transmembrane protein 200A Synonyms: KIAA1913,TTMA,TTMC

Target Details

Gene ID: 114801

Application Details

Application Notes: Immunohistochemistry (1:50-1:200)
The optimal working dilution should be determined by the end user.

Restrictions: For Research Use only

Handling

Format: Liquid

Buffer: In PBS, pH 7.2 (40 % glycerol, 0.02 % sodium azide)

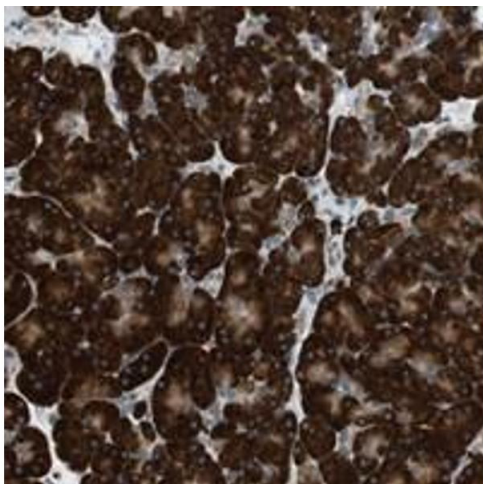
Preservative: Sodium azide

Precaution of Use: This product contains Sodium azide: a POISONOUS AND HAZARDOUS SUBSTANCE which should be handled by trained staff only.

Storage: 4 °C,-20 °C

Storage Comment: Store at 4°C. For long term storage store at -20°C.
Aliquot to avoid repeated freezing and thawing.

Images



Immunohistochemistry

Image 1. Immunohistochemical staining of human pancreas with TMEM200A polyclonal antibody shows strong cytoplasmic positivity in exocrine glandular cells.