



Datasheet for ABIN5589690  
**anti-TMEM242 antibody**



[Go to Product page](#)

1 Image

Overview

Quantity:	100 µL
Target:	TMEM242
Reactivity:	Human
Host:	Rabbit
Clonality:	Polyclonal
Application:	Immunohistochemistry (Paraffin-embedded Sections) (IHC (p))

Product Details

Purpose:	Rabbit polyclonal antibody raised against recombinant TMEM242.
Immunogen:	Recombinant protein corresponding to amino acids of human TMEM242.
Sequence:	METAGAATGQ PASGLEAPGS TNDRL
Isotype:	IgG
Cross-Reactivity:	Human

Target Details

Target:	TMEM242
Alternative Name:	TMEM242 ( <a href="#">TMEM242 Products</a> )
Background:	Full Gene Name: transmembrane protein 242 Synonyms: RP11-96F3.3,BM033,C6orf35
Gene ID:	729515

## Application Details

---

Application Notes:	Immunohistochemistry (1:20-1:50) The optimal working dilution should be determined by the end user.
Restrictions:	For Research Use only

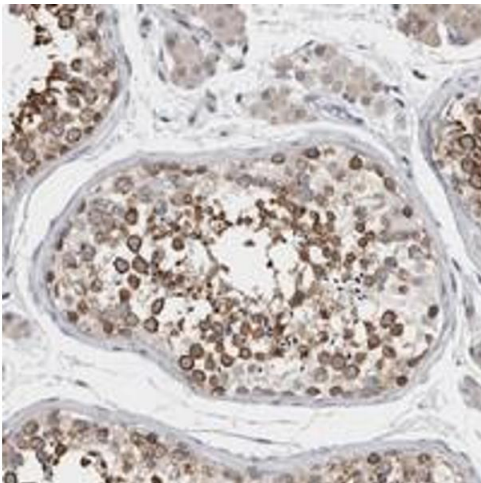
## Handling

---

Format:	Liquid
Buffer:	In PBS, pH 7.2 (40 % glycerol, 0.02 % sodium azide)
Preservative:	Sodium azide
Precaution of Use:	This product contains Sodium azide: a POISONOUS AND HAZARDOUS SUBSTANCE which should be handled by trained staff only.
Storage:	4 °C,-20 °C
Storage Comment:	Store at 4°C. For long term storage store at -20°C. Aliquot to avoid repeated freezing and thawing.

## Images

---



### Immunohistochemistry

**Image 1.** Immunohistochemical staining of human testis with TMEM242 polyclonal antibody shows strong cytoplasmic positivity in cells in seminiferous ducts.