



[Go to Product page](#)

Datasheet for ABIN5589703
anti-TMEM40 antibody (AA 1-203)

1 Image

Overview

Quantity:	50 µg
Target:	TMEM40
Binding Specificity:	AA 1-203
Reactivity:	Human
Host:	Mouse
Clonality:	Polyclonal
Conjugate:	This TMEM40 antibody is un-conjugated
Application:	Western Blotting (WB)

Product Details

Purpose:	Mouse polyclonal antibody raised against a full-length human TMEM40 protein.
Immunogen:	TMEM40 (AAH20658, 1 a.a. ~ 203 a.a) full-length human protein.
Sequence:	METSASSSQP QDNSQVHRET EDVDYGETDF HKQDGKAGLF SQEQYERNKS SSSSSSSSSS SSSSSSSSSS GPGHGEPDVL KDELQLYGDA PGEVPSGES GLRRRGSDPA SGEVEASQLR RLNIKKDDEF FHFVLLCFAI GALLVCYHYY ADWFMSLGVG LLTFASLETV GIYFGLVYRI HSVLQGFIP L FQKFRLTGFR KTD
Cross-Reactivity:	Human
Characteristics:	This antibody is validated with a full-length human protein expressed from a mammalian transfected lysate, demonstrating high reactivity, sensitivity and specificity. In addition, this antibody has the ability to recognize both linear and conformational protein epitopes for maximum antibody performance!

Target Details

Target:	TMEM40
Alternative Name:	TMEM40 (TMEM40 Products)
Background:	Full Gene Name: transmembrane protein 40 Synonyms: FLJ11036
Gene ID:	55287

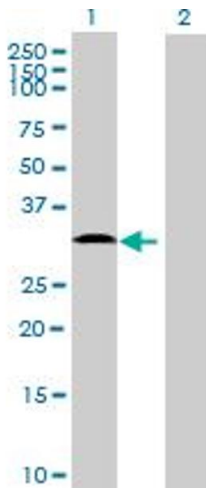
Application Details

Application Notes:	Optimal working dilution should be determined by the investigator.
Restrictions:	For Research Use only

Handling

Buffer:	In 1x PBS, pH 7.4
Storage:	-20 °C
Storage Comment:	Store at -20°C or lower. Aliquot to avoid repeated freezing and thawing.

Images



Western Blotting

Image 1. Western Blot analysis of TMEM40 expression in transfected 293T cell line (H00055287-T01) by TMEM40 MaxPab polyclonal antibody. Lane 1: TMEM40 transfected lysate(22.33 KDa). Lane 2: Non-transfected lysate.