



[Go to Product page](#)

Datasheet for ABIN5589937

## anti-Topoisomerase II alpha antibody (AA 1352-1493)

### 2 Images

#### Overview

Quantity:	100 µg
Target:	Topoisomerase II alpha (TOP2A)
Binding Specificity:	AA 1352-1493
Reactivity:	Human
Host:	Mouse
Clonality:	Monoclonal
Conjugate:	This Topoisomerase II alpha antibody is un-conjugated
Application:	Western Blotting (WB), Immunofluorescence (IF), Immunohistochemistry (Paraffin-embedded Sections) (IHC (p)), Flow Cytometry (FACS)

#### Product Details

Purpose:	Mouse monoclonal antibody raised against partial recombinant human TOP2A.
Immunogen:	Recombinant protein corresponding to amino acids 1352-1493 of human TOP2A.
Clone:	TOP2A-1361
Isotype:	IgG2b
Cross-Reactivity:	Human

#### Target Details

Target:	Topoisomerase II alpha (TOP2A)
Alternative Name:	TOP2A ( <a href="#">TOP2A Products</a> )

## Target Details

---

Background: Full Gene Name: topoisomerase (DNA) II alpha 170 kDa  
Synonyms: TOP2,TP2A

---

Gene ID: 7153

---

Pathways: [Cell Division Cycle, Mitotic G1-G1/S Phases](#)

## Application Details

---

Application Notes: Flow Cytometry (0.5-1 µg/10<sup>6</sup> cells)  
Immunofluorescence (1-2 µg/mL)  
Immunohistochemistry (Formalin/PFA-fixed paraffin-embedded sections) (0.5-1 µg/mL)  
Western Blotting (0.5-1 µg/mL)  
The optimal working dilution should be determined b

---

Restrictions: For Research Use only

## Handling

---

Format: Liquid

---

Buffer: In 10 mM PBS (0.05 % BSA, 0.05 % sodium azide).

---

Preservative: Sodium azide

---

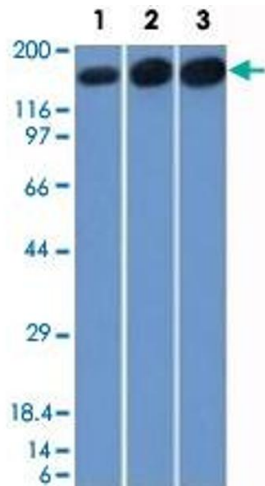
Precaution of Use: This product contains Sodium azide: a POISONOUS AND HAZARDOUS SUBSTANCE which should be handled by trained staff only.

---

Storage: 4 °C

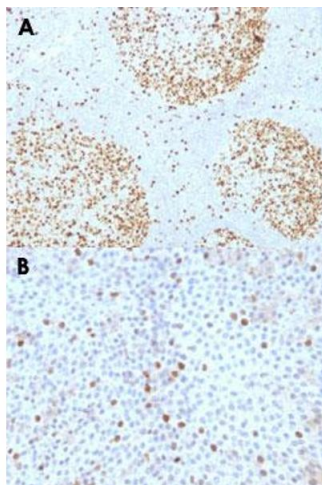
---

Storage Comment: Store at 4°C.



### Western Blotting

**Image 1.** Western Blot analysis of Lane 1: HepG2, Lane 2: HeLa and Lane 3: 3T3 cell lysates with TOP2A monoclonal antibody, clone TOP2A/1361 .



### Immunohistochemistry

**Image 2.** Immunohistochemical staining (Formalin-fixed paraffin-embedded sections) of human tonsil (A) and human bladder carcinoma (B) with TOP2A monoclonal antibody, clone TOP2A/1361 .