

Datasheet for ABIN5590048

anti-TPCN2 antibody[Go to Product page](#)**1** Image

Overview

Quantity:	100 µL
Target:	TPCN2
Reactivity:	Human
Host:	Rabbit
Clonality:	Polyclonal
Conjugate:	This TPCN2 antibody is un-conjugated
Application:	Immunohistochemistry (Paraffin-embedded Sections) (IHC (p))

Product Details

Purpose:	Rabbit polyclonal antibody raised against recombinant TPCN2.
Immunogen:	Recombinant protein corresponding to amino acids of human TPCN2.
Sequence:	QFRGYLMKSL QTSLFRRRLG TRAAFEVLSS MVGEGGAFPQ AVGVKPQNLL QVLQKVQLDS SHRQAMMEKV RSYGSVLLSA EEFQKLFNEL DRSVVKEHPP RPEYQSPFLQ SAQFLFGHYY F
Isotype:	IgG
Cross-Reactivity:	Human

Target Details

Target:	TPCN2
Alternative Name:	TPCN2 (TPCN2 Products)
Background:	Full Gene Name: two pore segment channel 2

Target Details

Synonyms: FLJ41094,SHEP10,TPC2

Gene ID: 219931

Application Details

Application Notes: Immunohistochemistry (1:50-1:200)
The optimal working dilution should be determined by the end user.

Restrictions: For Research Use only

Handling

Format: Liquid

Buffer: In PBS, pH 7.2 (40 % glycerol, 0.02 % sodium azide)

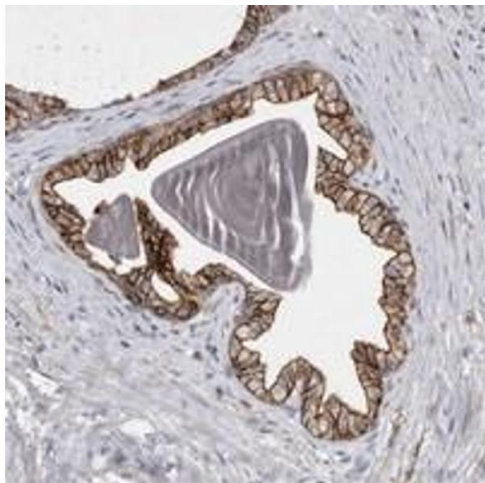
Preservative: Sodium azide

Precaution of Use: This product contains Sodium azide: a POISONOUS AND HAZARDOUS SUBSTANCE which should be handled by trained staff only.

Storage: 4 °C,-20 °C

Storage Comment: Store at 4°C. For long term storage store at -20°C.
Aliquot to avoid repeated freezing and thawing.

Images



Immunohistochemistry

Image 1. Immunohistochemical staining of human prostate with TPCN2 polyclonal antibody shows strong membranous positivity in glandular cells.