

Datasheet for ABIN5590052

**anti-Tryptophan Hydroxylase 1 antibody (AA 25-75)****3** Images[Go to Product page](#)

## Overview

Quantity:	100 µg
Target:	Tryptophan Hydroxylase 1 (TPH1)
Binding Specificity:	AA 25-75
Reactivity:	Human, Mouse, Rat
Host:	Rabbit
Clonality:	Polyclonal
Conjugate:	This Tryptophan Hydroxylase 1 antibody is un-conjugated
Application:	Western Blotting (WB), ELISA, Immunofluorescence (IF), Immunohistochemistry (Paraffin-embedded Sections) (IHC (p))

## Product Details

Purpose:	Rabbit polyclonal antibody raised against synthetic peptide of TPH1.
Immunogen:	A synthetic peptide corresponding to amino acids 25-75 of human TPH1.
Specificity:	This antibody is specific to TPH1.
Cross-Reactivity:	Human, Mouse, Rat

## Target Details

Target:	Tryptophan Hydroxylase 1 (TPH1)
Alternative Name:	TPH1 ( <a href="#">TPH1 Products</a> )
Background:	Full Gene Name: tryptophan hydroxylase 1

## Target Details

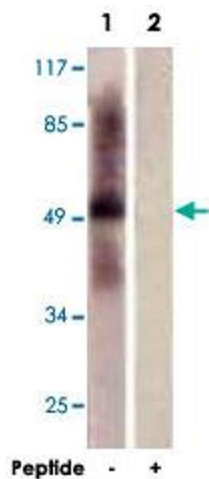
	Synonyms: MGC119994,TPH,TPRH
Gene ID:	7166
Pathways:	<a href="#">Feeding Behaviour</a>

## Application Details

Application Notes:	Western Blot (1:500-1:1000) Immunohistochemistry (1:50-1:100) Immunofluorescence (1:500-1:1000) ELISA (1:20000) The optimal working dilution should be determined by the end user.
Restrictions:	For Research Use only

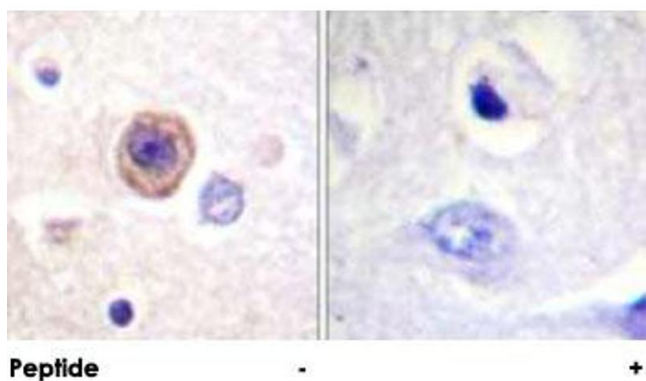
## Handling

Format:	Liquid
Concentration:	1 mg/mL
Buffer:	In PBS, 150 mM NaCl, pH 7.4 (50 % glycerol, 0.02 % sodium azide)
Preservative:	Sodium azide
Precaution of Use:	This product contains Sodium azide: a POISONOUS AND HAZARDOUS SUBSTANCE which should be handled by trained staff only.
Storage:	-20 °C
Storage Comment:	Store at -20°C. Aliquot to avoid repeated freezing and thawing.



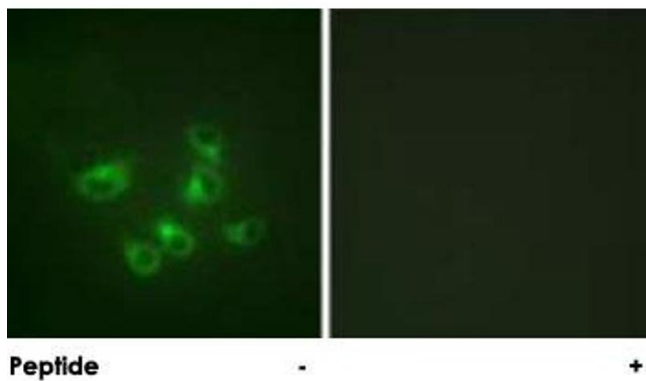
Western Blotting

**Image 1.** Western blot analysis of extracts from HepG2 cells, using TPH1 polyclonal antibody . Peptide



Immunohistochemistry

**Image 2.** Immunohistochemical analysis of paraffin-embedded human brain tissue using TPH1 polyclonal antibody . Peptide



Immunofluorescence

**Image 3.** Immunofluorescence analysis of HepG2 cells, using TPH1 polyclonal antibody . Peptide