

Datasheet for ABIN5590363 **anti-TUBA3C antibody (N-Term)**



[Go to Product page](#)

1 Image

Overview

Quantity:	100 µg
Target:	TUBA3C
Binding Specificity:	N-Term
Reactivity:	Human, Mouse, Rat
Host:	Rabbit
Clonality:	Polyclonal
Conjugate:	This TUBA3C antibody is un-conjugated
Application:	Western Blotting (WB), ELISA

Product Details

Purpose:	Rabbit polyclonal antibody raised against synthetic peptide of TUBA3C.
Immunogen:	A synthetic peptide corresponding to 16 amino acids at N-terminus of human TUBA3C.
Isotype:	IgG
Cross-Reactivity:	Human, Mouse, Rat

Target Details

Target:	TUBA3C
Alternative Name:	TUBA3C (TUBA3C Products)
Background:	Full Gene Name: tubulin, alpha 3c Synonyms: TUBA2,bA408E5.3

Target Details

Gene ID:	7278
Pathways:	Microtubule Dynamics

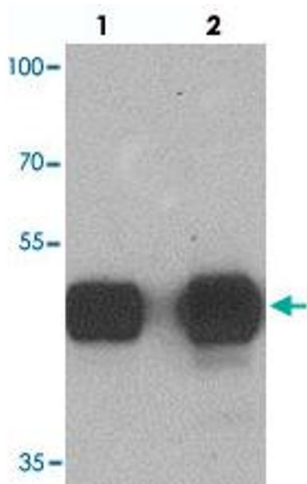
Application Details

Application Notes:	Western Blot (0.5-1 µg/mL) The optimal working dilution should be determined by the end user.
Restrictions:	For Research Use only

Handling

Format:	Liquid
Concentration:	1 mg/mL
Buffer:	In PBS (0.02 % sodium azide)
Preservative:	Sodium azide
Precaution of Use:	This product contains Sodium azide: a POISONOUS AND HAZARDOUS SUBSTANCE which should be handled by trained staff only.
Storage:	4 °C,-20 °C
Storage Comment:	Store at 4°C for three months. For long term storage store at -20°C. Aliquot to avoid repeated freezing and thawing.

Images



Western Blotting

Image 1. Western blot analysis of TUBA3C in mouse brain tissue with TUBA3C polyclonal antibody at (lane 1) 0.5 and (lane 2) 1 ug/mL.