



[Go to Product page](#)

Datasheet for ABIN5590469  
**anti-TYRO3 antibody (AA 100-250)**

1 Image

### Overview

Quantity:	100 µL
Target:	TYRO3
Binding Specificity:	AA 100-250
Reactivity:	Human, Mouse
Host:	Rabbit
Clonality:	Polyclonal
Conjugate:	This TYRO3 antibody is un-conjugated
Application:	Western Blotting (WB), Immunofluorescence (IF), Immunocytochemistry (ICC)

### Product Details

Purpose:	Rabbit polyclonal antibody raised against synthetic peptide of TYRO3.
Immunogen:	A synthetic peptide corresponding to amino acids 100-250 of human TYRO3.
Specificity:	Human and mouse. 100 % sequence identity to human and mouse protein, 94 % sequence identity to rat protein. This antibody is useful for Western blot analysis where a band can be seen at ~96 KDa.
Cross-Reactivity:	Human, Mouse

### Target Details

Target:	TYRO3
Alternative Name:	TYRO3 ( <a href="#">TYRO3 Products</a> )

## Target Details

---

Background: Full Gene Name: TYRO3 protein tyrosine kinase  
Synonyms: BYK,Brt,Dtk,FLJ16467,RSE,Sky,Tif

---

Gene ID: 7301

---

Pathways: [RTK Signaling](#)

## Application Details

---

Application Notes: Immunocytochemistry (1:200)  
Immunofluorescence (1:200)  
Western Blot (2 µg/mL)  
The optimal working dilution should be determined by the end user.

---

Restrictions: For Research Use only

## Handling

---

Format: Liquid

---

Buffer: In PBS (30 % glycerol, 0.09 % sodium azide)

---

Preservative: Sodium azide

---

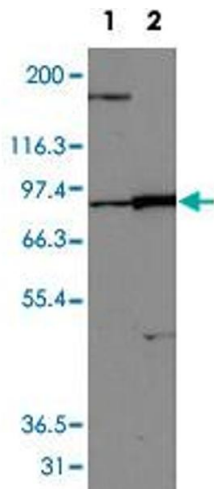
Precaution of Use: This product contains Sodium azide: a POISONOUS AND HAZARDOUS SUBSTANCE which should be handled by trained staff only.

---

Storage: 4 °C,-20 °C

---

Storage Comment: Store at 4°C for short term. For long term storage store at -20°C.  
Aliquot to avoid repeated freezing and thawing.



### Western Blotting

**Image 1.** Western blot with TYRO3 polyclonal antibody .  
Lane 1 : Normal human brain Lane 2 : Normal mouse brain.