

Datasheet for ABIN5590476

**anti-Tyrosinase-Related Protein 1 antibody (AA 257-377)**[Go to Product page](#)**2** Images

## Overview

Quantity:	100 µL
Target:	Tyrosinase-Related Protein 1 (TYRP1)
Binding Specificity:	AA 257-377
Reactivity:	Human
Host:	Rabbit
Clonality:	Polyclonal
Conjugate:	This Tyrosinase-Related Protein 1 antibody is un-conjugated
Application:	Western Blotting (WB), Immunohistochemistry (Paraffin-embedded Sections) (IHC (p))

## Product Details

Purpose:	Rabbit polyclonal antibody raised against partial recombinant human TYRP1.
Immunogen:	Recombinant protein corresponding to amino acids 257- 377 of human TYRP1.
Sequence:	VCDICTDDL M GSRSNFDSTL ISPN SVFSQW RVVCD SLEDY DTLGTL CNST EDGPIRRNPA GNVARPMVQR LPEPQDVAQC LEVGLFDTPP FYSNSTNSFR NTEGYSDPT GKYDPAVRSL H
Isotype:	IgG
Cross-Reactivity:	Human

## Target Details

Target:	Tyrosinase-Related Protein 1 (TYRP1)
Alternative Name:	TYRP1 ( <a href="#">TYRP1 Products</a> )

Target Details

Background:	Full Gene Name: tyrosinase-related protein 1 Synonyms: CAS2,CATB,GP75,TRP,TYRP,b-PROTEIN
-------------	---

Gene ID: 7306

Application Details

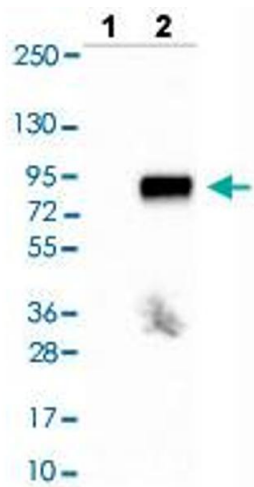
Application Notes:	Immunohistochemistry (Formalin/PFA-fixed paraffin-embedded sections) (1:200 - 1:500) Western Blot (1:100 - 1:250) The optimal working dilution should be determined by the end user.
--------------------	--

Restrictions: For Research Use only

Handling

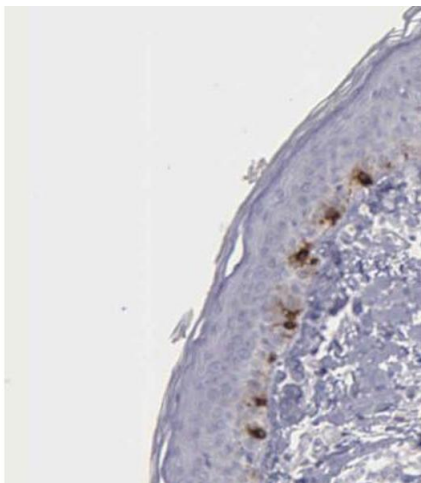
Format:	Liquid
Buffer:	In PBS, pH 7.2 (40 % glycerol, 0.02 % sodium azide).
Preservative:	Sodium azide
Precaution of Use:	This product contains Sodium azide: a POISONOUS AND HAZARDOUS SUBSTANCE which should be handled by trained staff only.
Storage:	4 °C,-20 °C
Storage Comment:	Store at 4°C. For long term storage store at -20°C. Aliquot to avoid repeated freezing and thawing.

Images



**Western Blotting**

**Image 1.** Western blot analysis of Lane 1: Negative control (vector only transfected HEK293T lysate), Lane 2: Over-expression lysate (Co-expressed with a C-terminal myc-DDK tag (~3.1 kDa) in mammalian HEK293T cells) with TYRP1 polyclonal antibody .



#### Immunohistochemistry

**Image 2.** Immunohistochemical staining (Formalin-fixed paraffin-embedded sections) of human skin shows distinct cytoplasmic positivity in melanocytes with TYRP1 polyclonal antibody .