

Datasheet for ABIN5590505  
**anti-UBE2S antibody (AA 1-222)**[Go to Product page](#)

## 2 Images

## Overview

Quantity:	100 µL
Target:	UBE2S
Binding Specificity:	AA 1-222
Reactivity:	Human
Host:	Mouse
Clonality:	Monoclonal
Conjugate:	This UBE2S antibody is un-conjugated
Application:	Western Blotting (WB), ELISA, Immunofluorescence (IF), Flow Cytometry (FACS), Immunocytochemistry (ICC)

## Product Details

Purpose:	Mouse monoclonal antibody raised against full length recombinant UBE2S.
Immunogen:	Recombinant protein corresponding to amino acids 1-222 of human UBE2S.
Clone:	AT2C12
Isotype:	IgG2a
Cross-Reactivity:	Human

## Target Details

Target:	UBE2S
Alternative Name:	UBE2S ( <a href="#">UBE2S Products</a> )

Target Details

Background:	Full Gene Name: ubiquitin-conjugating enzyme E2S Synonyms: E2-EPF,E2EPF,EPF5
Gene ID:	27338
Pathways:	<a href="#">Ubiquitin Proteasome Pathway</a>

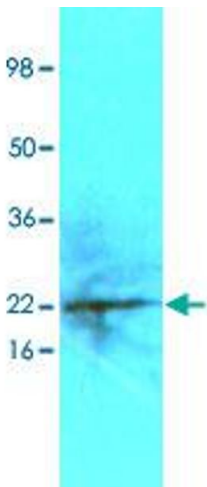
Application Details

Application Notes:	The optimal working dilution should be determined by the end user.
Restrictions:	For Research Use only

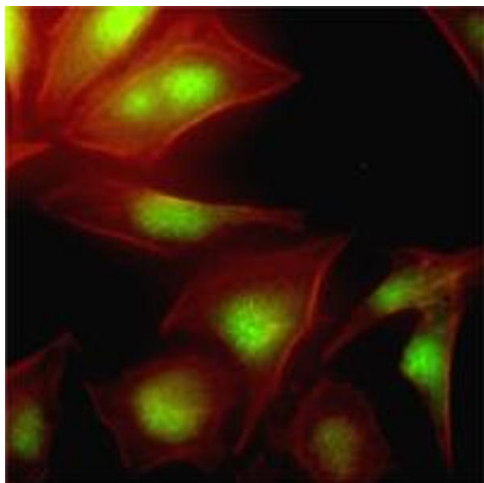
Handling

Format:	Liquid
Buffer:	In PBS, pH 7.4 (10 % glycerol, 0.02 % sodium azide).
Preservative:	Sodium azide
Precaution of Use:	This product contains Sodium azide: a POISONOUS AND HAZARDOUS SUBSTANCE which should be handled by trained staff only.
Storage:	-20 °C,-80 °C
Storage Comment:	Store at 2°C to 8°C for 1 week. For long term storage, aliquot and store at -20°C to -80°C. Aliquot to avoid repeated freezing and thawing.

Images



**Image 1.** Cell lysates of 293T (50 ug) were resolved by SDS-PAGE, transferred to NC membrane and probed with UBE2S monoclonal antibody, clone AT2C12 (1 : 250). Proteins were visualized using a goat anti-mouse secondary antibody conjugated to HRP and an ECL detection system.



#### Immunofluorescence

**Image 2.** Immunofluorescence of human HeLa cells stained with Phalloidin-TRITC (Red) for Actin staining and UBE2S monoclonal antibody, clone AT2C12 (1 : 500) with Alexa 488 (Green).