



[Go to Product page](#)

Datasheet for ABIN5590506

## anti-UBE3D antibody

### 2 Images

#### Overview

Quantity:	100 µL
Target:	UBE3D
Reactivity:	Human
Host:	Rabbit
Clonality:	Polyclonal
Conjugate:	This UBE3D antibody is un-conjugated
Application:	Immunohistochemistry (Paraffin-embedded Sections) (IHC (p)), Western Blotting (WB)

#### Product Details

Purpose:	Rabbit polyclonal antibody raised against recombinant UBE3D.
Immunogen:	Recombinant protein corresponding to amino acids of human UBE3D.
Sequence:	SLVIESLRNS KYIKKFPLLE NTFKADSSSA WSAVKVLYQP CIKSRNEKLV SLWESDISVH PLTLPSATCL ELLL
Isotype:	IgG
Cross-Reactivity:	Human

#### Target Details

Target:	UBE3D
Alternative Name:	UBE3D ( <a href="#">UBE3D Products</a> )
Background:	Full Gene Name: ubiquitin protein ligase E3D

## Target Details

---

Synonyms: RP4-751H9.1,C6orf157,H10BH,UBE2CBP,YJR141W

Gene ID: 90025

## Application Details

---

Application Notes: Immunohistochemistry (1:20-1:50)  
Western Blot (1:250-1:500)  
The optimal working dilution should be determined by the end user.

Restrictions: For Research Use only

## Handling

---

Format: Liquid

Buffer: In PBS, pH 7.2 (40 % glycerol, 0.02 % sodium azide)

Preservative: Sodium azide

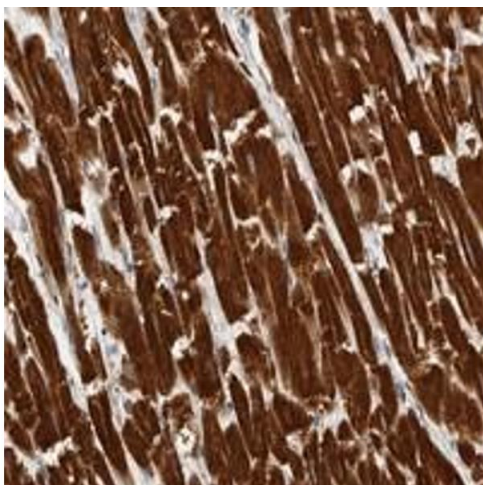
Precaution of Use: This product contains Sodium azide: a POISONOUS AND HAZARDOUS SUBSTANCE which should be handled by trained staff only.

Storage: 4 °C,-20 °C

Storage Comment: Store at 4°C. For long term storage store at -20°C.  
Aliquot to avoid repeated freezing and thawing.

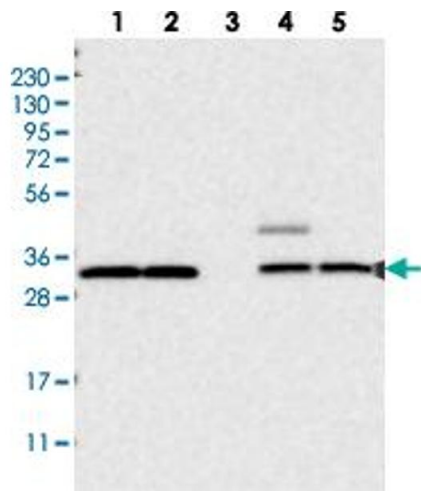
## Images

---



### Immunohistochemistry

**Image 1.** Immunohistochemical staining of human heart muscle with UBE3D polyclonal antibody shows strong cytoplasmic positivity in myocytes at 1:20-1:50 dilution.



### Western Blotting

**Image 2.** Western blot analysis of Lane 1: RT-4, Lane 2: U-251 MG, Lane 3: Human Plasma, Lane 4: Liver, Lane 5: Tonsil with UBE3D polyclonal antibody at 1:250-1:500 dilution.