



Datasheet for ABIN5590544

anti-UCHL3 antibody



[Go to Product page](#)

1 Image

Overview

Quantity:	50 µg
Target:	UCHL3 (Uchl3)
Reactivity:	Human, Rat, Mouse, Dog, Chicken, Gorilla
Host:	Rabbit
Clonality:	Polyclonal
Conjugate:	This UCHL3 antibody is un-conjugated
Application:	Immunohistochemistry (Paraffin-embedded Sections) (IHC (p))

Product Details

Purpose:	Rabbit polyclonal antibody raised against synthetic peptide of UCHL3.
Immunogen:	A synthetic peptide (conjugated with KLH) corresponding to human UCHL3.
Specificity:	Internal domain of human.
Cross-Reactivity:	Chicken, Dog, Gorilla, Human, Mouse, Rat

Target Details

Target:	UCHL3 (Uchl3)
Alternative Name:	UCHL3 (Uchl3 Products)
Background:	Full Gene Name: ubiquitin carboxyl-terminal esterase L3 (ubiquitin thiolesterase) Synonyms: UCH-L3
Gene ID:	7347

Target Details

Pathways: [Feeding Behaviour](#), [Positive Regulation of fat Cell Differentiation](#)

Application Details

Application Notes: Immunohistochemistry (Formalin/PFA-fixed paraffin-embedded sections) (10 µg/mL)
The optimal working dilution should be determined by the end user.

Restrictions: For Research Use only

Handling

Format: Liquid

Buffer: In PBS (0.09 % sodium azide)

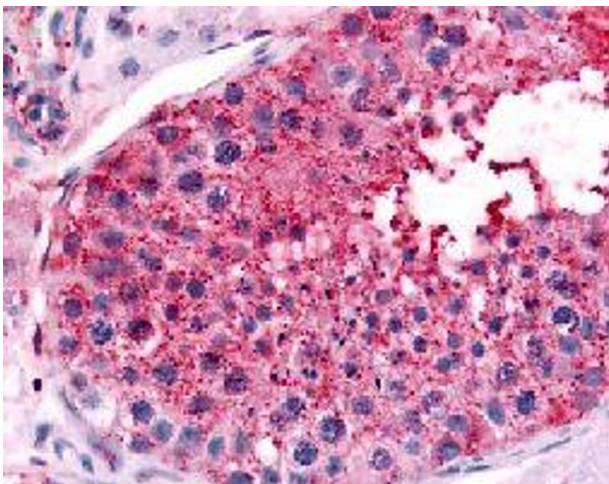
Preservative: Sodium azide

Precaution of Use: This product contains Sodium azide: a POISONOUS AND HAZARDOUS SUBSTANCE which should be handled by trained staff only.

Storage: 4 °C,-80 °C

Storage Comment: Store at 4°C. For long term storage store at -80°C.
Aliquot to avoid repeated freezing and thawing.

Images



Immunohistochemistry

Image 1. Immunohistochemical (Formalin/PFA-fixed paraffin-embedded sections) staining in human testis with UCHL3 polyclonal antibody .