



[Go to Product page](#)

Datasheet for ABIN5590546

## anti-UCKL1 antibody

### 2 Images

#### Overview

Quantity:	100 µL
Target:	UCKL1
Reactivity:	Human
Host:	Rabbit
Clonality:	Polyclonal
Conjugate:	This UCKL1 antibody is un-conjugated
Application:	Immunohistochemistry (Paraffin-embedded Sections) (IHC (p)), Immunofluorescence (IF)

#### Product Details

Purpose:	Rabbit polyclonal antibody raised against partial recombinant human UCKL1.
Immunogen:	Recombinant protein corresponding to human UCKL1.
Sequence:	AVCKDVRIGT ILIQTNQLTG EPELHYLRLP KDISDDHVIL MDCTVSTGAA AMMAVRVLLD HDVPEDKIFL LSLLMAEMGV HSVAYAFPRV RIITTAVDKR VNDLFRIIPG IGNFQDRYFG TDAVPDGSDE
Isotype:	IgG
Cross-Reactivity:	Human

#### Target Details

Target:	UCKL1
Alternative Name:	UCKL1 ( <a href="#">UCKL1 Products</a> )

## Target Details

Background: Full Gene Name: uridine-cytidine kinase 1-like 1  
Synonyms: UCK1-LIKE,UCK1L,URKL1

Gene ID: 54963

Pathways: [Ribonucleoside Biosynthetic Process](#)

## Application Details

Application Notes: Immunofluorescence (1-4 µg/mL)  
Immunohistochemistry (Formalin/PFA-fixed paraffin-embedded sections) (1:200-1:500)  
The optimal working dilution should be determined by the end user.

Restrictions: For Research Use only

## Handling

Format: Liquid

Buffer: In PBS, pH 7.2 (40 % glycerol, 0.02 % sodium azide).

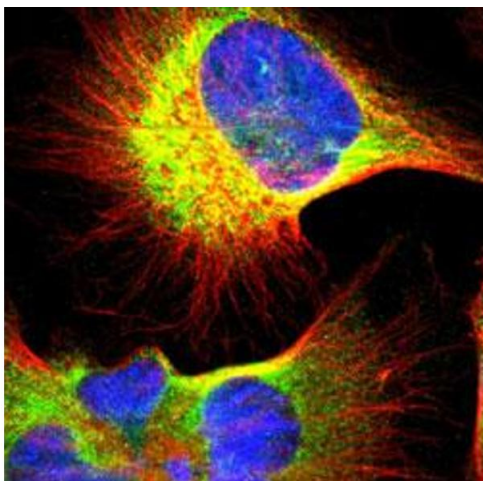
Preservative: Sodium azide

Precaution of Use: This product contains Sodium azide: a POISONOUS AND HAZARDOUS SUBSTANCE which should be handled by trained staff only.

Storage: 4 °C,-20 °C

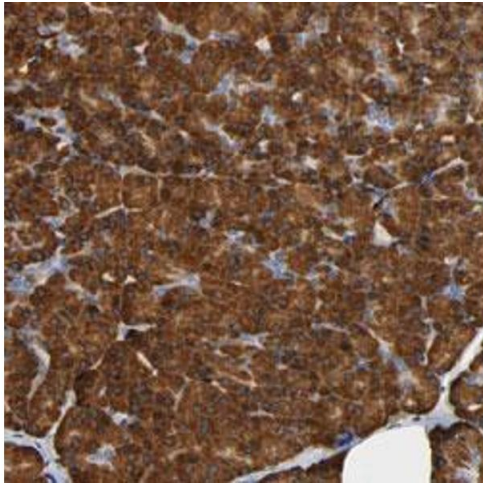
Storage Comment: Store at 4°C. For long term storage store at -20°C.  
Aliquot to avoid repeated freezing and thawing.

## Images



### Immunofluorescence

**Image 1.** Immunofluorescent staining of U-251 MG with UCKL1 polyclonal antibody (Green) shows positivity in endoplasmic reticulum.



### Immunohistochemistry

**Image 2.** Immunohistochemical staining (Formalin-fixed paraffin-embedded sections) of human pancreas with UCKL1 polyclonal antibody shows strong cytoplasmic positivity in exocrine glandular cells.