

Datasheet for ABIN5590802  
**anti-VSIG1 antibody (PE)**[Go to Product page](#)

## 1 Image

## Overview

Quantity:	100 µg
Target:	VSIG1
Reactivity:	Chicken
Host:	Mouse
Clonality:	Monoclonal
Conjugate:	This VSIG1 antibody is conjugated to PE
Application:	Flow Cytometry (FACS), Immunoprecipitation (IP)

## Product Details

Purpose:	Mouse monoclonal antibody raised against native VSIG1.
Immunogen:	Native purified from chicken thymocytes.
Clone:	CT1
Isotype:	IgG1
Specificity:	ChT1 antigen (Mr 63/104 KDa) on chicken thymocytes.
Cross-Reactivity:	Chicken

## Target Details

Target:	VSIG1
Alternative Name:	VSIG1 ( <a href="#">VSIG1 Products</a> )
Background:	Full Gene Name: V-set and immunoglobulin domain containing 1

Target Details

	Synonyms: CHT1
Gene ID:	414795

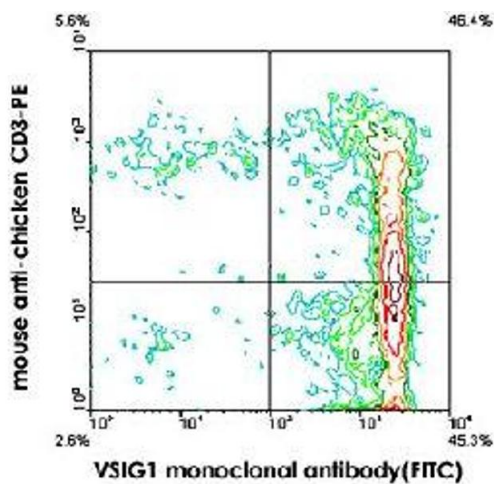
Application Details

Application Notes:	Flow Cytometry (0.2 µg/10 <sup>6</sup> cells) The optimal working dilution should be determined by the end user.
Restrictions:	For Research Use only

Handling

Format:	Liquid
Buffer:	In PBS (0.09 % sodium azide)
Preservative:	Sodium azide
Precaution of Use:	This product contains Sodium azide: a POISONOUS AND HAZARDOUS SUBSTANCE which should be handled by trained staff only.
Storage:	4 °C
Storage Comment:	Store in the dark at 4°C. Do not freeze. Avoid prolonged exposure to light. Aliquot to avoid repeated freezing and thawing.

Images



**Image 1.** Chicken thymocytes were double stained with mouse anti-chicken CD3-PE and VSIG1 monoclonal antibody, clone CT1 (FITC) . Analysis was performed on a FACScan™ flow cytometer (BDB, San Jose, CA) using a light scatter gate to identify small lymphocytes.