

Datasheet for ABIN5590872
anti-WDHD1 antibody (C-Term)[Go to Product page](#)

2 Images

Overview

| | |
|----------------------|--|
| Quantity: | 50 µg |
| Target: | WDHD1 |
| Binding Specificity: | C-Term |
| Reactivity: | Human |
| Host: | Mouse |
| Clonality: | Monoclonal |
| Conjugate: | This WDHD1 antibody is un-conjugated |
| Application: | Western Blotting (WB), Immunohistochemistry (Paraffin-embedded Sections) (IHC (p)) |

Product Details

| | |
|-------------------|---|
| Purpose: | Mouse monoclonal antibody raised against partial recombinant human WDHD1. |
| Immunogen: | Recombinant protein corresponding to C-terminus region of human WDHD1. |
| Clone: | 20G10 |
| Isotype: | IgG2a |
| Cross-Reactivity: | Human |

Target Details

| | |
|-------------------|---|
| Target: | WDHD1 |
| Alternative Name: | WDHD1 (WDHD1 Products) |
| Background: | Full Gene Name: WD repeat and HMG-box DNA binding protein 1 |

Target Details

| | |
|----------|-----------------|
| | Synonyms: AND-1 |
| Gene ID: | 11169 |

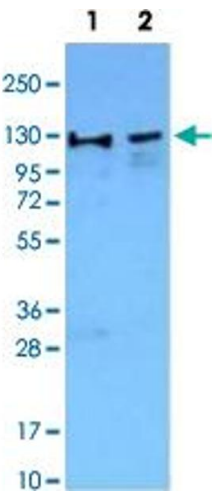
Application Details

| | |
|--------------------|---|
| Application Notes: | Immunohistochemistry (Formalin/PFA-fixed paraffin-embedded sections) (15 µg/mL) Western Blot The optimal working dilution should be determined by the end user. |
| Restrictions: | For Research Use only |

Handling

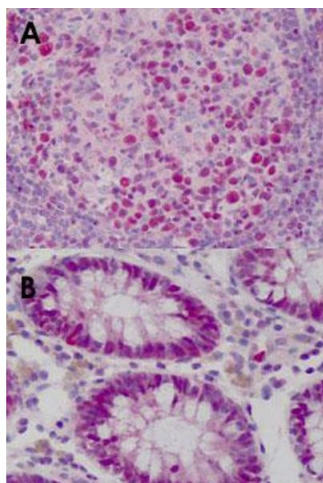
| | |
|--------------------|--|
| Format: | Liquid |
| Buffer: | In PBS, pH 7.2 (0.09 % sodium azide). |
| Preservative: | Sodium azide |
| Precaution of Use: | This product contains Sodium azide: a POISONOUS AND HAZARDOUS SUBSTANCE which should be handled by trained staff only. |
| Storage: | 4 °C,-20 °C |
| Storage Comment: | Store at 4°C. For long term storage store at -20°C. Aliquot to avoid repeated freezing and thawing. |

Images



Western Blotting

Image 1. Western Blot analysis of Lane 1: Jurkat nuclear cell extracts and Lane 2: NIH/3T3 nuclear extracts with WDHD1 monoclonal antibody, clone 20G10 followed by HRP-conjugated goat anti-mouse IgG secondary antibody and visualized by chemiluminescence detection system.



Immunohistochemistry

Image 2. Immunohistochemical staining (Formalin-fixed paraffin-embedded sections) of human tonsil (A) and human colon (B) with WDHD1 monoclonal antibody, clone 20G10 at 15 ug/mL working concentration.