



Datasheet for ABIN5590889
anti-WDR47 antibody



[Go to Product page](#)

2 Images

Overview

Quantity:	100 µL
Target:	WDR47
Reactivity:	Human
Host:	Rabbit
Clonality:	Polyclonal
Conjugate:	This WDR47 antibody is un-conjugated
Application:	Western Blotting (WB), Immunohistochemistry (Paraffin-embedded Sections) (IHC (p))

Product Details

Purpose:	Rabbit polyclonal antibody raised against recombinant WDR47.
Immunogen:	Recombinant protein corresponding to amino acids of human WDR47.
Sequence:	LLYECCVEFC QSKATGEEIT ESEVLLGIDL LCGNGCDDL DLSLLSWLQNL PSSVFSCAFE QKMLNIHVDK LLKPTKAAYA DLLTPLISKL SPYP
Isotype:	IgG
Cross-Reactivity:	Human

Target Details

Target:	WDR47
Alternative Name:	WDR47 (WDR47 Products)
Background:	Full Gene Name: WD repeat domain 47

Target Details

Synonyms: FLJ90135,KIAA0893

Gene ID: 22911

Application Details

Application Notes: Immunohistochemistry (1:20-1:50)
Western Blot (1:250-1:500)
The optimal working dilution should be determined by the end user.

Restrictions: For Research Use only

Handling

Format: Liquid

Buffer: In PBS, pH 7.2 (40 % glycerol, 0.02 % sodium azide)

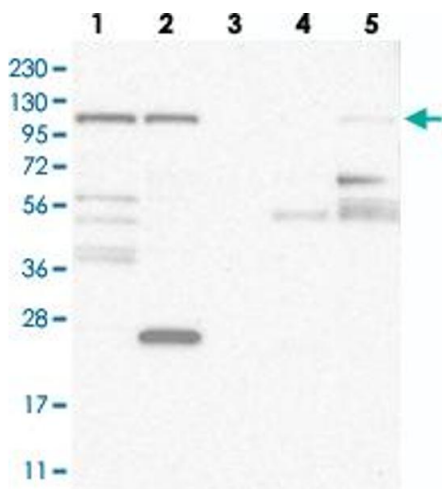
Preservative: Sodium azide

Precaution of Use: This product contains Sodium azide: a POISONOUS AND HAZARDOUS SUBSTANCE which should be handled by trained staff only.

Storage: 4 °C,-20 °C

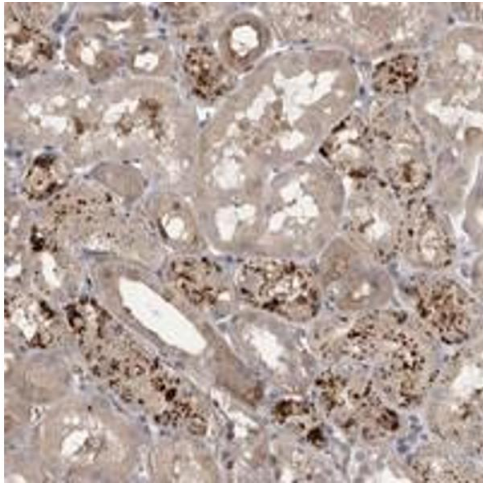
Storage Comment: Store at 4°C. For long term storage store at -20°C.
Aliquot to avoid repeated freezing and thawing.

Images



Western Blotting

Image 1. Western blot analysis of Lane 1: RT-4, Lane 2: U-251 MG, Lane 3: Human Plasma, Lane 4: Liver, Lane 5: Tonsil with WDR47 polyclonal antibody .



Immunohistochemistry

Image 2. Immunohistochemical staining of human kidney with WDR47 polyclonal antibody shows distinct cytoplasmic positivity in a subset of renal tubules.