



Datasheet for ABIN5590891
anti-WDR48 antibody



[Go to Product page](#)

3 Images

Overview

Quantity:	100 µL
Target:	WDR48
Reactivity:	Human
Host:	Rabbit
Clonality:	Polyclonal
Conjugate:	This WDR48 antibody is un-conjugated
Application:	Western Blotting (WB), Immunohistochemistry (Paraffin-embedded Sections) (IHC (p)), Immunofluorescence (IF)

Product Details

Purpose:	Rabbit polyclonal antibody raised against recombinant WDR48.
Immunogen:	Recombinant protein corresponding to amino acids of human WDR48.
Sequence:	SIIQCHILND KRHILTKDTN NNVAYWDVLK ACKVEDLGKV DFEDIKKRF KMOVVVPNWFS VDLKTGMLTI TLDESDFCAA WWSAKDAGF
Isotype:	IgG
Cross-Reactivity:	Human, Mouse

Target Details

Target:	WDR48
Alternative Name:	WDR48 (WDR48 Products)

Target Details

Background:	Full Gene Name: WD repeat domain 48 Synonyms: DKFZp686G1794,KIAA1449,P80
Gene ID:	57599

Application Details

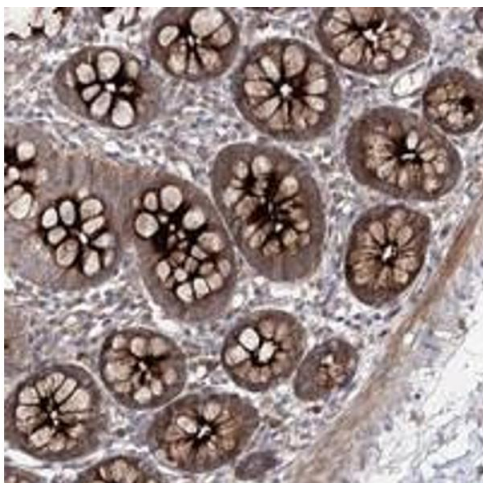
Application Notes:	Immunohistochemistry (1:20-1:50) Western Blot (1:250-1:500) Immunofluorescence (1-4 µg/mL) The optimal working dilution should be determined by the end user.
--------------------	--

Restrictions:	For Research Use only
---------------	-----------------------

Handling

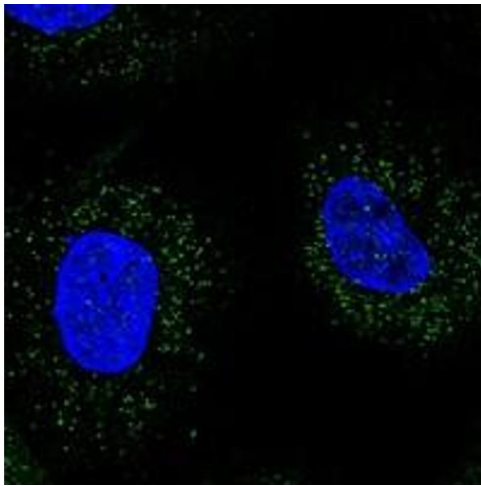
Format:	Liquid
Buffer:	In PBS, pH 7.2 (40 % glycerol, 0.02 % sodium azide)
Preservative:	Sodium azide
Precaution of Use:	This product contains Sodium azide: a POISONOUS AND HAZARDOUS SUBSTANCE which should be handled by trained staff only.
Storage:	4 °C,-20 °C
Storage Comment:	Store at 4°C. For long term storage store at -20°C. Aliquot to avoid repeated freezing and thawing.

Images



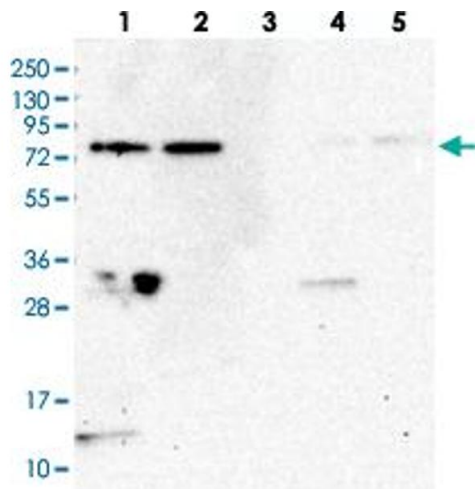
Immunohistochemistry

Image 1. Immunohistochemical staining of human colon with WDR48 polyclonal antibody shows strong cytoplasmic positivity in glandular cells at 1:20-1:50 dilution.



Immunofluorescence

Image 2. Immunofluorescent staining of human cell line A-431 with WDR48 polyclonal antibody at 1-4 ug/mL dilution shows positivity in vesicles.



Western Blotting

Image 3. Western blot analysis of Lane 1: RT-4, Lane 2: U-251 MG, Lane 3: Human Plasma, Lane 4: Liver, Lane 5: Tonsil with WDR48 polyclonal antibody at 1:250-1:500 dilution.