



Datasheet for ABIN5590897
anti-WDR59 antibody



[Go to Product page](#)

1 Image

Overview

Quantity:	100 µL
Target:	WDR59
Reactivity:	Human
Host:	Rabbit
Clonality:	Polyclonal
Conjugate:	This WDR59 antibody is un-conjugated
Application:	Immunohistochemistry (Paraffin-embedded Sections) (IHC (p))

Product Details

Purpose:	Rabbit polyclonal antibody raised against recombinant WDR59.
Immunogen:	Recombinant protein corresponding to amino acids of human WDR59.
Sequence:	TSSQDNSVKF WDYRQPRKYL NILPCQVPVW KARYTPFSNG LVTVMVPQLR RENSLLLWNV FDLNTPVHTF VGHDDVVLEF QWRKQKEGSK D
Isotype:	IgG
Cross-Reactivity:	Human

Target Details

Target:	WDR59
Alternative Name:	WDR59 (WDR59 Products)
Background:	Full Gene Name: WD repeat domain 59

Target Details

Synonyms: FLJ12270,FP977,MGC11230

Gene ID: 79726

Application Details

Application Notes: Immunohistochemistry (1:20-1:50)
The optimal working dilution should be determined by the end user.

Restrictions: For Research Use only

Handling

Format: Liquid

Buffer: In PBS, pH 7.2 (40 % glycerol, 0.02 % sodium azide)

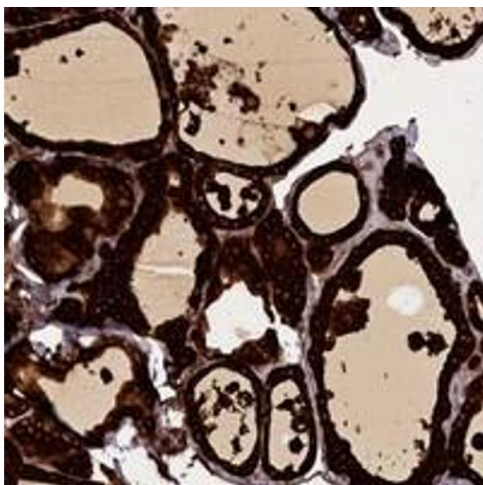
Preservative: Sodium azide

Precaution of Use: This product contains Sodium azide: a POISONOUS AND HAZARDOUS SUBSTANCE which should be handled by trained staff only.

Storage: 4 °C,-20 °C

Storage Comment: Store at 4°C. For long term storage store at -20°C.
Aliquot to avoid repeated freezing and thawing.

Images



Immunohistochemistry

Image 1. Immunohistochemical staining of human thyroid gland with WDR59 polyclonal antibody shows strong cytoplasmic positivity in glandular cells at 1:20-1:50 dilution.