



Datasheet for ABIN5590899
anti-WDR60 antibody



[Go to Product page](#)

1 Image

Overview

Quantity:	100 µL
Target:	WDR60
Reactivity:	Human
Host:	Rabbit
Clonality:	Polyclonal
Conjugate:	This WDR60 antibody is un-conjugated
Application:	Immunohistochemistry (Paraffin-embedded Sections) (IHC (p))

Product Details

Purpose:	Rabbit polyclonal antibody raised against recombinant WDR60.
Immunogen:	Recombinant protein corresponding to amino acids of human WDR60.
Sequence:	DIQTEEIETR EVWTQHPGES TVVSGGSEQR DTSDAVVMPK IDTPRLCSFL RAACQVMAVL LEEDRLAAEP SWNLRAQDRA LYFSDSSSQL NTSLPFLQNR KVSSLHTSRV QRQMVSVH
Isotype:	IgG
Cross-Reactivity:	Human

Target Details

Target:	WDR60
Alternative Name:	WDR60 (WDR60 Products)
Background:	Full Gene Name: WD repeat domain 60

Target Details

Synonyms: FLJ10300,FLJ23575

Gene ID: 55112

Application Details

Application Notes: Immunohistochemistry (1:50-1:200)
The optimal working dilution should be determined by the end user.

Restrictions: For Research Use only

Handling

Format: Liquid

Buffer: In PBS, pH 7.2 (40 % glycerol, 0.02 % sodium azide)

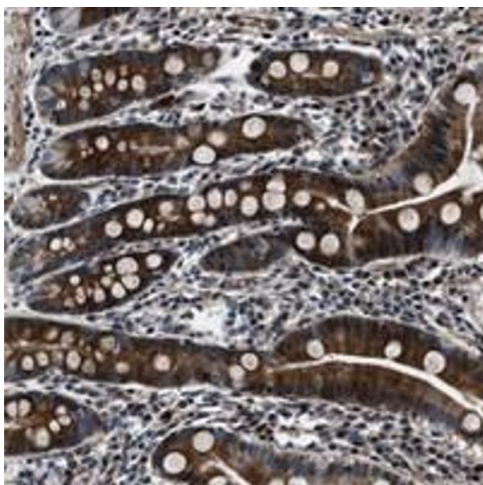
Preservative: Sodium azide

Precaution of Use: This product contains Sodium azide: a POISONOUS AND HAZARDOUS SUBSTANCE which should be handled by trained staff only.

Storage: 4 °C,-20 °C

Storage Comment: Store at 4°C. For long term storage store at -20°C.
Aliquot to avoid repeated freezing and thawing.

Images



Immunohistochemistry

Image 1. Immunohistochemical staining of human duodenum with WDR60 polyclonal antibody strong cytoplasmic positivity in glandular cells.