



Datasheet for ABIN5590901  
**anti-WDR64 antibody**



[Go to Product page](#)

1 Image

### Overview

Quantity:	100 µL
Target:	WDR64
Reactivity:	Human
Host:	Rabbit
Clonality:	Polyclonal
Conjugate:	This WDR64 antibody is un-conjugated
Application:	Immunohistochemistry (Paraffin-embedded Sections) (IHC (p))

### Product Details

Purpose:	Rabbit polyclonal antibody raised against recombinant WDR64.
Immunogen:	Recombinant protein corresponding to amino acids of human WDR64.
Sequence:	TGLQVYQILE PHGFNTEVTS AAVDESGFLF ATGAYNGTVR IWDFGSGQEM KVLPEGKDWK EDEHCLRRLI FLKAQE
Isotype:	IgG
Cross-Reactivity:	Human

### Target Details

Target:	WDR64
Alternative Name:	WDR64 ( <a href="#">WDR64 Products</a> )
Background:	Full Gene Name: WD repeat domain 64

## Target Details

Synonyms: FLJ32978

Gene ID: 128025

## Application Details

Application Notes: Immunohistochemistry (1:200-1:500)  
The optimal working dilution should be determined by the end user.

Restrictions: For Research Use only

## Handling

Format: Liquid

Buffer: In PBS, pH 7.2 (40 % glycerol, 0.02 % sodium azide)

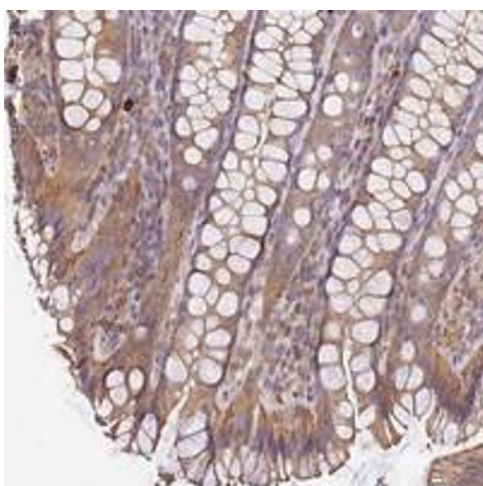
Preservative: Sodium azide

Precaution of Use: This product contains Sodium azide: a POISONOUS AND HAZARDOUS SUBSTANCE which should be handled by trained staff only.

Storage: 4 °C, -20 °C

Storage Comment: Store at 4°C. For long term storage store at -20°C.  
Aliquot to avoid repeated freezing and thawing.

## Images



### Immunohistochemistry

**Image 1.** Immunohistochemical staining of human rectum with WDR64 polyclonal antibody shows moderate cytoplasmic positivity in glandular cells.