



Datasheet for ABIN5590913
anti-WDR89 antibody



[Go to Product page](#)

2 Images

Overview

| | |
|--------------|--|
| Quantity: | 100 µL |
| Target: | WDR89 |
| Reactivity: | Human |
| Host: | Rabbit |
| Clonality: | Polyclonal |
| Conjugate: | This WDR89 antibody is un-conjugated |
| Application: | Western Blotting (WB), Immunohistochemistry (Paraffin-embedded Sections) (IHC (p)) |

Product Details

| | |
|-------------------|---|
| Purpose: | Rabbit polyclonal antibody raised against recombinant WDR89. |
| Immunogen: | Recombinant protein corresponding to amino acids of human WDR89. |
| Sequence: | DEGFYWDLN HLDTDEPVTR LNIQDVREVV NMKEDALDYL IGGLYHEKTD TLHVIGGTNK GRIHLMNCSM SGLTHVTSLQ GGHAATVRSF CWNVQDDSLT TGGEDAQLLL WKPGAIEKTF TKKESMKIAS SVHQRVVRVHS N |
| Isotype: | IgG |
| Cross-Reactivity: | Human |

Target Details

| | |
|-------------------|--|
| Target: | WDR89 |
| Alternative Name: | WDR89 (WDR89 Products) |

Target Details

| | |
|-------------|--|
| Background: | Full Gene Name: WD repeat domain 89 Synonyms: C14orf150,MGC9907,MSTP050 |
| Gene ID: | 112840 |

Application Details

| | |
|--------------------|--|
| Application Notes: | Immunohistochemistry (1:20-1:50) Western Blot (1:250-1:500) The optimal working dilution should be determined by the end user. |
| Restrictions: | For Research Use only |

Handling

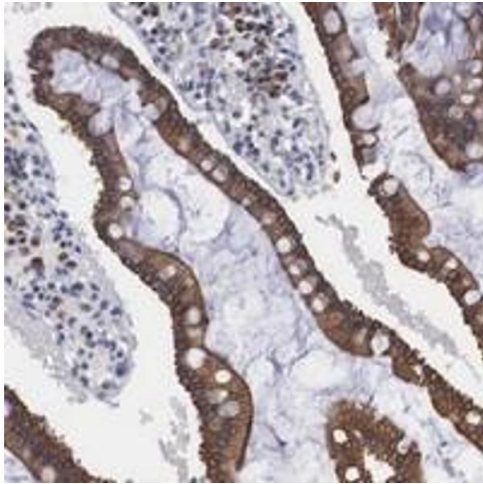
| | |
|--------------------|--|
| Format: | Liquid |
| Buffer: | In PBS, pH 7.2 (40 % glycerol, 0.02 % sodium azide) |
| Preservative: | Sodium azide |
| Precaution of Use: | This product contains Sodium azide: a POISONOUS AND HAZARDOUS SUBSTANCE which should be handled by trained staff only. |
| Storage: | 4 °C, -20 °C |
| Storage Comment: | Store at 4°C. For long term storage store at -20°C. Aliquot to avoid repeated freezing and thawing. |

Images



Western Blotting

Image 1. Western blot analysis of Lane 1: Negative control (vector only transfected HEK293T lysate), Lane 2: Over-expression Lysate (Co-expressed with a C-terminal myc-DDK tag (~3.1 kDa) in mammalian HEK293T cells with WDR89 polyclonal antibody .



Immunohistochemistry

Image 2. Immunohistochemical staining of human duodenum with WDR89 polyclonal antibody shows cytoplasmic positivity in glandular cells.