

Datasheet for ABIN5590934

anti-WIPF3 antibody[Go to Product page](#)**1** Image

Overview

Quantity:	100 µL
Target:	WIPF3
Reactivity:	Human
Host:	Rabbit
Clonality:	Polyclonal
Conjugate:	This WIPF3 antibody is un-conjugated
Application:	Immunohistochemistry (Paraffin-embedded Sections) (IHC (p))

Product Details

Purpose:	Rabbit polyclonal antibody raised against recombinant WIPF3.
Immunogen:	Recombinant protein corresponding to amino acids of human WIPF3.
Sequence:	ELSSKSQQAT AWTPTQQPGG QLRNGSLHII DDFESKFTFH SVEDFPPPDE YKPCQKIYPS
Isotype:	IgG
Cross-Reactivity:	Human

Target Details

Target:	WIPF3
Alternative Name:	WIPF3 (WIPF3 Products)
Background:	Full Gene Name: WAS/WASL interacting protein family, member 3 Synonyms: CR16,FLJ36931

Target Details

Gene ID: 644150

Application Details

Application Notes: Immunohistochemistry (1:50-1:200)
The optimal working dilution should be determined by the end user.

Restrictions: For Research Use only

Handling

Format: Liquid

Buffer: In PBS, pH 7.2 (40 % glycerol, 0.02 % sodium azide)

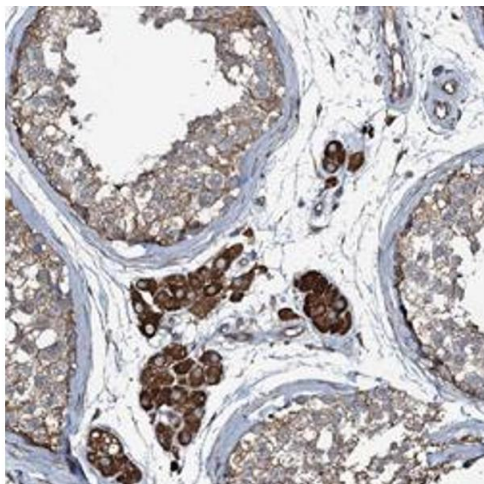
Preservative: Sodium azide

Precaution of Use: This product contains Sodium azide: a POISONOUS AND HAZARDOUS SUBSTANCE which should be handled by trained staff only.

Storage: 4 °C, -20 °C

Storage Comment: Store at 4°C. For long term storage store at -20°C.
Aliquot to avoid repeated freezing and thawing.

Images



Immunohistochemistry

Image 1. Immunohistochemical staining of human testis with WIPF3 polyclonal antibody shows moderate cytoplasmic positivity in cells in seminiferous ducts and strong staining in Leydig cells at 1:50-1:200 dilution.