

Datasheet for ABIN5590962

anti-WNT11 antibody (Internal Region)[Go to Product page](#)**1** Image

Overview

Quantity:	50 µg
Target:	WNT11
Binding Specificity:	Internal Region
Reactivity:	Human, Mouse, Rat, Horse, Cow, Rabbit, Dog, Monkey, Bat, Chicken, Pig, Hamster, Gibbon, Gorilla
Host:	Rabbit
Clonality:	Polyclonal
Conjugate:	This WNT11 antibody is un-conjugated
Application:	Immunohistochemistry (Paraffin-embedded Sections) (IHC (p))

Product Details

Purpose:	Rabbit polyclonal antibody raised against synthetic peptide of WNT11.
Immunogen:	A synthetic peptide corresponding to 15 amino acids at internal region of human WNT11.
Specificity:	BLAST analysis of the peptide immunogen showed no homology with other human proteins.
Cross-Reactivity:	Bat, Chicken, Cow, Dog, Gibbon, Gorilla, Hamster, Horse, Human, Monkey, Mouse, Pig, Rabbit, Rat
Cross-Reactivity (Details):	BLAST analysis of the peptide immunogen showed no homology with other human proteins.

Target Details

Target:	WNT11
---------	-------

Target Details

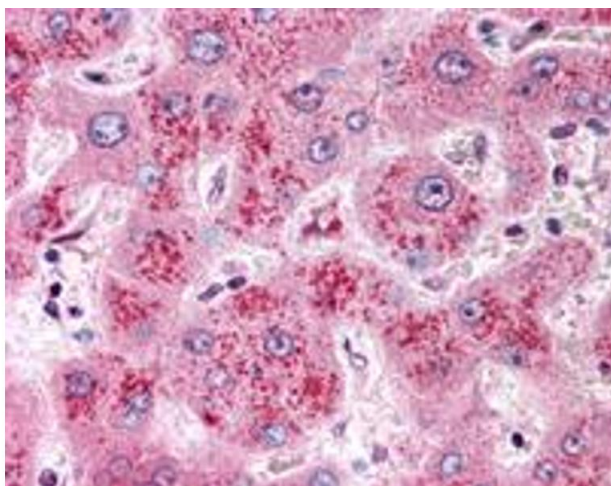
Alternative Name:	WNT11 (WNT11 Products)
Background:	Full Gene Name: wingless-type MMTV integration site family, member 11 Synonyms: HWNT11,MGC141946,MGC141948
Gene ID:	7481
Pathways:	WNT Signaling , Cell-Cell Junction Organization

Application Details

Application Notes:	Immunohistochemistry (Formalin/PFA-fixed paraffin-embedded sections) (10 µg/mL) The optimal working dilution should be determined by the end user.
Restrictions:	For Research Use only

Handling

Format:	Liquid
Buffer:	In PBS (0.09 % sodium azide)
Preservative:	Sodium azide
Precaution of Use:	This product contains Sodium azide: a POISONOUS AND HAZARDOUS SUBSTANCE which should be handled by trained staff only.
Storage:	4 °C,-80 °C
Storage Comment:	Store at 4°C. For long term storage store at -80°C. Aliquot to avoid repeated freezing and thawing.



Immunohistochemistry

Image 1. Immunohistochemistry (Formalin/PFA-fixed paraffin-embedded sections) of human liver with WNT11 polyclonal antibody . Immunohistochemistry of formalin-fixed, paraffin-embedded tissue after heat-induced antigen retrieval.