

Datasheet for ABIN5590977
anti-WNT8A antibody (Internal Region)[Go to Product page](#)

1 Image

Overview

Quantity:	50 µg
Target:	WNT8A
Binding Specificity:	Internal Region
Reactivity:	Human, Gorilla, Gibbon
Host:	Rabbit
Clonality:	Polyclonal
Conjugate:	This WNT8A antibody is un-conjugated
Application:	Immunohistochemistry (Paraffin-embedded Sections) (IHC (p))

Product Details

Purpose:	Rabbit polyclonal antibody raised against synthetic peptide of WNT8A.
Immunogen:	A synthetic peptide corresponding to 14 amino acids at internal region of human WNT8A.
Specificity:	BLAST analysis of the peptide immunogen showed no homology with other human proteins, except CYP2D6 (64 %).
Cross-Reactivity:	Gibbon, Gorilla, Human
Cross-Reactivity (Details):	BLAST analysis of the peptide immunogen showed no homology with other human proteins, except CYP2D6 (64 %).

Target Details

Target:	WNT8A
---------	-------

Target Details

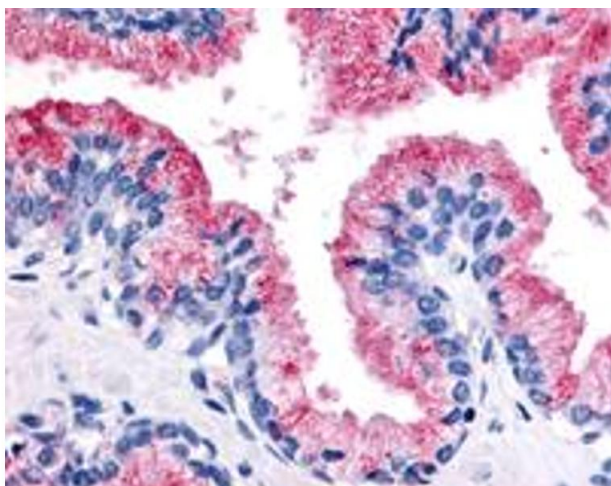
Alternative Name:	WNT8A (WNT8A Products)
Background:	Full Gene Name: wingless-type MMTV integration site family, member 8A Synonyms: WNT8D
Gene ID:	7478
Pathways:	WNT Signaling

Application Details

Application Notes:	Immunohistochemistry (Formalin/PFA-fixed paraffin-embedded sections) (5 µg/mL) The optimal working dilution should be determined by the end user.
Restrictions:	For Research Use only

Handling

Format:	Liquid
Buffer:	In PBS (0.09 % sodium azide)
Preservative:	Sodium azide
Precaution of Use:	This product contains Sodium azide: a POISONOUS AND HAZARDOUS SUBSTANCE which should be handled by trained staff only.
Storage:	4 °C,-80 °C
Storage Comment:	Store at 4°C. For long term storage store at -80°C. Aliquot to avoid repeated freezing and thawing.



Immunohistochemistry

Image 1. Immunohistochemistry (Formalin/PFA-fixed paraffin-embedded sections) of human prostate with WNT8A polyclonal antibody . Immunohistochemistry of formalin-fixed, paraffin-embedded tissue after heat-induced antigen retrieval.