

Datasheet for ABIN5590989  
**anti-WSCD2 antibody**



[Go to Product page](#)

2 Images

Overview

Quantity:	100 µL
Target:	WSCD2
Reactivity:	Human
Host:	Rabbit
Clonality:	Polyclonal
Conjugate:	This WSCD2 antibody is un-conjugated
Application:	Western Blotting (WB), Immunohistochemistry (Paraffin-embedded Sections) (IHC (p))

Product Details

Purpose:	Rabbit polyclonal antibody raised against recombinant WSCD2.
Immunogen:	Recombinant protein corresponding to amino acids of human WSCD2.
Sequence:	GAELSFLGDM HLGGRGFRDTG EASSIARRYG PWFKGGKDGNE RAKLGDYGGG WSRALKGRVV REKEEERAKY IGCYLDDTQS RALRGVSFFD YKKMTIFRCQ DNCAERGYLY
Isotype:	IgG
Cross-Reactivity:	Human

Target Details

Target:	WSCD2
Alternative Name:	WSCD2 ( <a href="#">WSCD2 Products</a> )
Background:	Full Gene Name: WSC domain containing 2

## Target Details

Synonyms: KIAA0789,MGC117165

Gene ID: 9671

## Application Details

Application Notes: Immunohistochemistry (1:20-1:50)  
Western Blot (1:250-1:500)  
The optimal working dilution should be determined by the end user.

Restrictions: For Research Use only

## Handling

Format: Liquid

Buffer: In PBS, pH 7.2 (40 % glycerol, 0.02 % sodium azide)

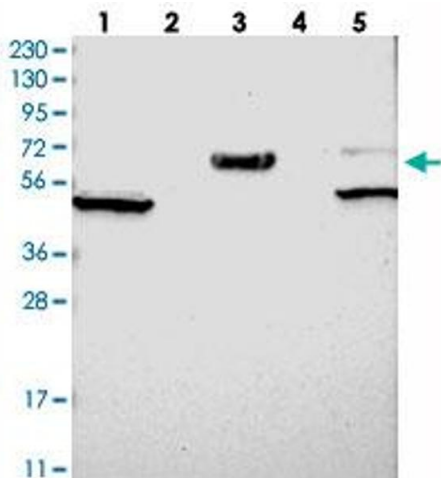
Preservative: Sodium azide

Precaution of Use: This product contains Sodium azide: a POISONOUS AND HAZARDOUS SUBSTANCE which should be handled by trained staff only.

Storage: 4 °C,-20 °C

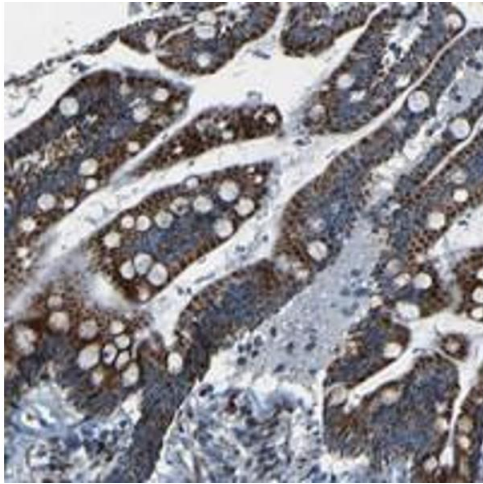
Storage Comment: Store at 4°C. For long term storage store at -20°C.  
Aliquot to avoid repeated freezing and thawing.

## Images



### Western Blotting

**Image 1.** Western blot analysis of Lane 1: RT-4, Lane 2: U-251 MG, Lane 3: Human Plasma, Lane 4: Liver, Lane 5: Tonsil with WSCD2 polyclonal antibody .



### Immunohistochemistry

**Image 2.** Immunohistochemical staining of human colon with WSCD2 polyclonal antibody shows strong cytoplasmic positivity, with a granular pattern, in glandular cells.