



[Go to Product page](#)

Datasheet for ABIN5591022

anti-XKR6 antibody

1 Image

Overview

Quantity:	100 µL
Target:	XKR6
Reactivity:	Human
Host:	Rabbit
Clonality:	Polyclonal
Conjugate:	This XKR6 antibody is un-conjugated
Application:	Immunohistochemistry (Paraffin-embedded Sections) (IHC (p))

Product Details

Purpose:	Rabbit polyclonal antibody raised against recombinant XKR6.
Immunogen:	Recombinant protein corresponding to amino acids of human XKR6.
Sequence:	YGV LHPTGPR AKILASSCCA ELLWGIPLPP DVEPMAPEIP GYRGTQVTPT RAVTEQQEDL TADTCLPVFQ VRPMGPPTPL GRPYLPEGPL IKIDMPR
Isotype:	IgG
Cross-Reactivity:	Human

Target Details

Target:	XKR6
Alternative Name:	XKR6 (XKR6 Products)
Background:	Full Gene Name: XK, Kell blood group complex subunit-related family, member 6

Target Details

Synonyms: C8orf21,C8orf7,XRG6

Gene ID: 286046

Application Details

Application Notes: Immunohistochemistry (1:200-1:500)
The optimal working dilution should be determined by the end user.

Restrictions: For Research Use only

Handling

Format: Liquid

Buffer: In PBS, pH 7.2 (40 % glycerol, 0.02 % sodium azide)

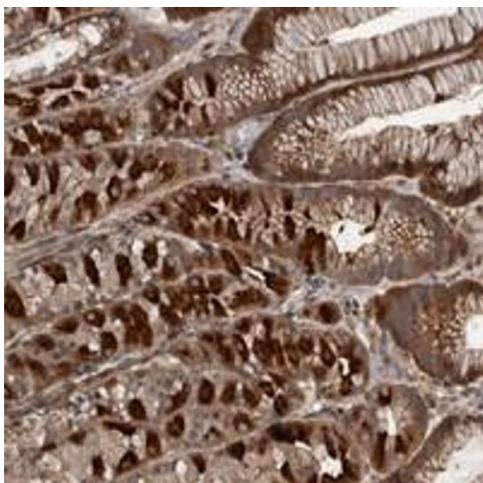
Preservative: Sodium azide

Precaution of Use: This product contains Sodium azide: a POISONOUS AND HAZARDOUS SUBSTANCE which should be handled by trained staff only.

Storage: 4 °C,-20 °C

Storage Comment: Store at 4°C. For long term storage store at -20°C.
Aliquot to avoid repeated freezing and thawing.

Images



Immunohistochemistry

Image 1. Immunohistochemical staining of human stomach with XKR6 polyclonal antibody shows strong cytoplasmic positivity in subsets of glandular cells at 1:200-1:500 dilution.